

abeba

OCCUPATIONAL SHOES
SAFETY SHOES



WORK / LIFE / BALANCE

ABOUT US



Shoes that do their job. So you can do yours.

When the people who bear responsibility are focused and committed to their work, **abeba** provides a supportive role. Indeed, our shoes are there to ensure that our customers can do their job easily at all times.

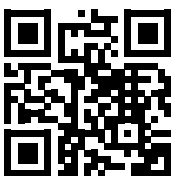
Our occupational and safety footwear is primarily aimed at protection and safety. From year to year, the focus is shifting more and more from minimal requirements to perfect wearing comfort and attractive styling. We work on this every day: founded 80 years ago in Saarland, we have been delivering all over the world for decades. In addition, we have been one of the market leaders in the ESD and cleanroom sector since 1988.

With continuous healthy growth, the **abeba**, **Protektor** and **Grom** brands now form the **abeba group**.

Does a work shoe fit well if you have to think about it all the time?

Certainly not. It's supposed to carry you, not stand out and make sure you get through your working day safely and comfortably. It's only when you put them on and take them off that you give a brief, satisfied smile to their modern design. That's exactly how it is with our shoes and exactly why so many people really love their Abeba shoes.

It's all about your wishes, your needs. With our shoes, we adapt to the day-to-day requirements of your feet. Because there are more important things to do in your working day than to deal with stressed feet, we promise to make your day easier.



Subscribe to our
NEWSLETTER
and
stay up to date!



CONTENT



Imprint

Editor:
ABEBA Spezialschuh-Ausstatter GmbH
Schlackenbergstrasse 5
D-66386 St. Ingbert
Tel: +49 6894 3103-100
Fax: +49 6894 3074
E-Mail: abeba@abeba.de
www.abeba.com

Editorial Team:
ABEBA Marketing and Sales

Layout:
ABEBA Marketing and
echtgut markeninszenierung GmbH

Photography:
Fandel Foto & Design

Our sales documents are also available in German and French.

We reserve the right to modify models, colours and technical details as well as the right to make a compensation or subsequent delivery. Printed on environmentally friendly paper.

GENERAL INFORMATION

- 006 ABEBA'S PROFESSIONAL WORLD
- 008 HACCP
- 010 ESD
- 013 BETTER DAY-TO-DAY MOBILITY
- 124 TECHNICAL INFORMATION
- 128 INDEX

PRODUCT RANGE

OCCUPATIONAL SHOES

- 014 THE ORIGINAL
- 022 HIGH ORIGINAL
- 023 THE ORIGINAL PLUS
- 024 DYNAMIC
- 032 EASY
- 036 RUBBER
- 040 ARROW
- 044 NATURE
- 048 AUTOCLAVABLE



- 050 DYNAMIC FLOW
- 054 AIR CUSHION
- 058 UNI6
- 066 BUSINESS



- 068 X-LIGHT
- 078 REFLEXOR
- 082 CLEAN ROOM



SAFETY SHOES

- 084 CLASSIC
- 086 X-LIGHT
- 094 ANATOM
- 102 CRAWLER



- 106 UNI6
- 114 STATIC CONTROL
- 116 BUSINESS
- 118 PROTEKTOR



ACCESSORIES

- 122 INSOLES
- 123 SET OF SHOELACES



**ABEBA
PROFESSIONAL
WORLDS**



Medicin



- High wearing comfort
- Breathability
- Protection against splash water
- Cushioning
- Good foot ventilation
- SRC slip resistance
- Certified for orthopedic insoles

Catering



- HACCP
- Optimal stability + grip
- Breathability
- Cushioning
- Good foot ventilation
- SRC slip resistance
- Certified for orthopedic insoles

Food industry



- HACCP
- High wearing comfort
- Good foot ventilation
- Optimal stability + grip
- Replaceable insole
- SRC slip resistance
- Certified for orthopedic insoles

ESD Protected area/Electronics



- ESD dissipative according to DIN EN 61340
- Cushioning
- High wearing comfort
- SRC slip resistance
- Certified for orthopedic insoles

Hygiene/Cleaning



- Easy care
- Breathability
- Water resistance
- Protection against splash water
- High wearing comfort
- Cushioning
- Certified for orthopedic insoles
- SRC slip resistance

Bakery



- High wearing comfort
- Good foot ventilation
- Cushioning
- Replaceable insole
- SRC slip resistance
- HACCP
- Certified for orthopedic insoles

Sheltered workshop



- Easy put on and off
- Cushioning
- Optimal stability + grip
- Replaceable insole
- High wearing comfort
- Certified for orthopedic insoles
- SRC slip resistance

Do you have any questions?

Then contact your regional manager.

He will help you to select the shoes suitable to your activity.

We can also create an individual digital brochure for you.

HACCP



HACCP

HACCP (Hazard Analysis Critical Control Point) is a control system based on hazard analysis. It is a method for controlling the safety of food. This system is used to identify, assess and avoid significant hygiene risks due to food.

In the production, processing and packaging of foodstuffs, all possible sources which might cause health problem after ingestion must be eliminated.

Thanks to this high level of quality, we guarantee that our products are free of bacterial colonies. Ask our team or your specialist retailers for the right shoes for your needs.

Please refer to all shoes marked with the „A-micro“ and „HACCP-compliant“ icon.



HACCP

HACCP - HAZARD ANALYSIS CRITICAL CONTROL POINTS

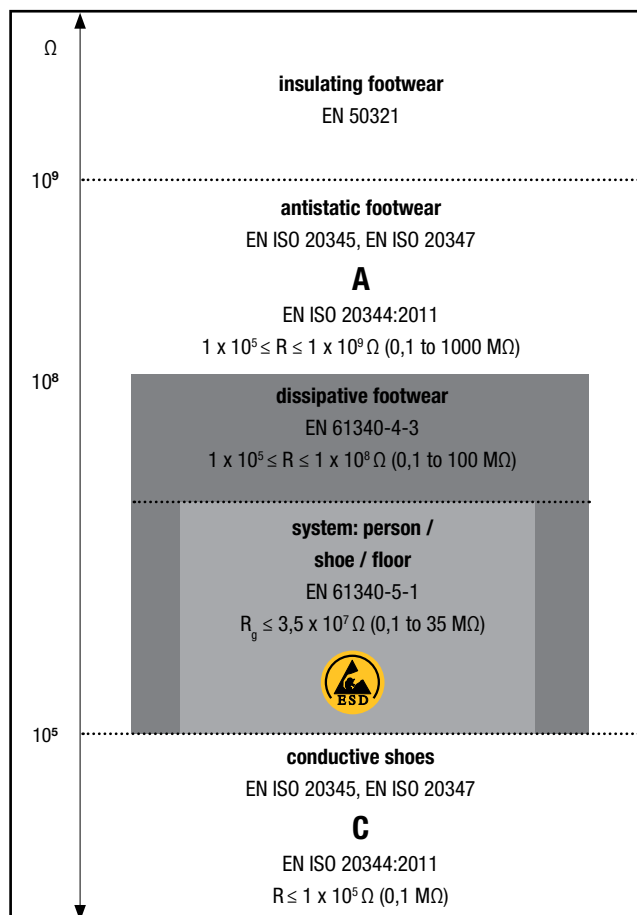
1. Conduct a Hazard Analysis
2. Identify the Critical Control Points (CCPs)
3. Establish Critical Limits
4. Monitor CCPs
5. Establish Corrective Plan
6. Verification of the system
7. Record keeping

ESD ELECTROSTATIC DISCHARGE



INFORMATION

Electrical resistance and protection against electrostatic phenomena. ESD-footwear as primary grounding in the system of person/ shoe/ floor



A and C: additional requirements of occupational- and safety shoes regarding electric property. R: electrical resistance. R_g : ground resistance.

For the daily function testing of the shoes the use of test stations has been established. There the resistance of person and shoe is measured. Attention should be paid to the separate measuring of the feet.

Electrical resistance

$10^3 \text{ Ohm} =$	$0,001 \text{ MOhm} =$	1 kOhm
$10^4 \text{ Ohm} =$	$0,01 \text{ MOhm} =$	10 kOhm
$10^5 \text{ Ohm} =$	$0,1 \text{ MOhm} =$	100 kOhm
$10^6 \text{ Ohm} =$	$1 \text{ MOhm} =$	1.000 kOhm
$10^7 \text{ Ohm} =$	10 MOhm	
$10^8 \text{ Ohm} =$	100 MOhm	
$10^9 \text{ Ohm} =$	$1.000 \text{ MOhm} =$	1 GOhm
$10^{10} \text{ Ohm} =$	$10.000 \text{ MOhm} =$	10 GOhm
$10^{11} \text{ Ohm} =$	$100.000 \text{ MOhm} =$	100 GOhm
$10^{12} \text{ Ohm} =$	$1.000.000 \text{ MOhm} =$	1.000 GOhm

WALKING TEST

Practical experience has shown that merely testing the shoes' contact resistances will not ensure adequate employee protection from accumulating excessive charges. We would also recommend additionally the ESD qualification Walking test (as per EN 61340-4-5, limit < 100 V) for the shoe/Floor-system in the areas concerned. The current trend is even to avoid discharges of more than 50 V, or even more than 20 V in specific fields!

The following aspects need to be considered with dissipative shoes:

- Effective person grounding is only possible in combination with conductive floors.
- Dirt on the outer sole or dust deposits can generate an insulating layer.
- External climatic conditions (e.g. low air humidity) can have a negative effect on contact resistance.
- Orthopaedic insoles and orthopaedic designs must not impair the footwear's discharge capacity.

ELECTROSTATIC DISCHARGE

Electrostatic Discharge (ESD) is defined as the compensation of electrical potential differences resulting in large electrostatic discharges. Under certain circumstances, these discharge can damage or even destroy electronic components.

Potential differences are often caused by friction or contact and separation of two objects. A person can be charged up to about 30,000 V. Only electrostatic discharges with an intensity of more than 3,000 V will be perceptible by humans as an electric shock sensation. Whereas many electronic components will be sensitive to discharges of only 5 to 30 V and damage can be caused without the person perceiving the discharge. Therefore, when working with products that are sensitive to electrostatic discharge, measures are needed to control the risks associated with electrostatic charges.

The most effective method of protection is the grounding of persons by using ESD footwear in combination with a dissipative floor that will ensure continuous dissipation of charges.

ESD shoes are used to discharge electrostatic charge via the ground to the ground potential. According to EN 61340-5-1 footwear is designated as ESD footwear if the electrical resistance in the human body-shoe-ground system is less than 35 MOhm (measured at the workplace). ESD certification according to 61340-4-3 is carried out in a laboratory. After preconditioning, the shoes are filled with metal balls and placed on a metal plate. The resistance in the shoe-metal plate system must not exceed 100 MOhm.

In practice, the dissipation capacity of ESD shoes is not only significantly influenced by the ambient climate (humidity and temperature), but also by factors such as dirt, the condition of the floor and the physical resistance of the person. ESD supervisors in companies are therefore required to check regularly whether the ESD products used still have the required properties. In areas where ESD footwear is worn, the resistance of the floor must be such that the protective function of the footwear is not neutralised. By carrying out „walking tests“ the person-ground system can be evaluated.

Warning : ESD footwear are not suitable for electricians neither while working on sources with any electric voltage.

Therefore, a shoe certified according to EN 61340-4-3 and EN 61340-5-1 is the most suitable shoe to guarantee the electrostatic voltage dissipation capacity. The dissipation of electrostatic charges is guaranteed even in conditions of low air humidity and dry materials, thus avoiding sudden discharges.

However, all other environmental influences that may have an effect on electrostatic discharge, such as a more insulating floor or insulating deposits on outsoles, must also be taken into account.

Wearing footwear that is certified according to EN 61340-4-3 and EN 61340-5-1 is highly recommended, not only in the chemical and electrical industries, when handling flammable liquids and gases, paints and varnishes, but also in classic sectors generating intense dust production, such as printing companies, mills and grain warehouses or forestry companies, where a static electricity discharge can generate an ignition or explosion.

Technical Rules for Operational Safety (TRBS 2153)

Section 7.1 of TRBS 2153 requires the wearing of dissipative footwear with a contact resistance of less than 100 megohms in hazardous areas. Our shoes meet this requirement according to EN 61340-4-3 (test with metal balls in the shoe on a metal plate) and EN 61340-5-1 (test with a person in the shoe on a metal plate).



DEFINITION

ESD - Electrostatic Discharge

Electrostatic discharge is caused by an imbalance of potential on charged objects or people by contact or close proximity.



ESD PROTECTIVE

The symbol was introduced in 1993. It is used to identify ESD protective products, such as antistatic mats, trolleys, clothing and occupational or safety footwear.



ESD SUSCEPTIBLE

The symbol has been in use since 1984. It identifies electrostatically sensitive components and assembly units.

ESDS

Electrostatic Discharge Sensitive Device

EPA

Electrostatic Protected Area

Area where sensitive devices can be handled directly with minimum risk of electrostatic damage.

Electrostatic charge

Is produced by frictional contact and separation of two materials.

Resistance to ground DIN EN 61340

Is the resistance from a surface or an object within an EPA, measured with a suitable ohmmeter and test probe.

Latent damage

Is the damage caused by ESD to sensitive devices, which has the effect of reducing components reliability without causing immediate failure.



BETTER DAY-TO-DAY MOBILITY

ABEBA MEANS BETTER MOBILITY IN YOUR DAILY LIFE!

In the technological development of our shoes, we integrate all our knowledge on safety and ergonomics. We know that a large part of our health starts with our feet.

That's why we're giving them our full attention. Not only do they have to carry us throughout our lives, but they also provide us with important information that is transmitted in milliseconds to our control centre, the brain. 70,000 sensors analyse the way we stand and coordinate our walking.

In the development of our shoes, we integrate all this knowledge to make walking easier:

Information between the ground and the foot is collected and transmitted throughout the shoe.

We have managed to optimize the different information elements of this chain:

- better foot support
- an ergonomic scroll
- an energy input at every step is the result of our new development

The inside of the shoe has also evolved thanks to the new insole Technology.

We can achieve faster muscle reaction (Proprioception) through a 3-point system in the shoe, which has the effect of straightening the wearer's posture. This results in a better posture and easier walking. Proprioception (from the Latin proprius „proper“ and recipere „that receives, made to receive“) describes the perception of the movement and position of the body in space or the position of different parts of the body in relation to each other.

As people sweat up to 240 millilitres of water through their feet in a day when walking, we have developed interchangeable (antibacterial) insoles.

It is also possible to wear individual orthopaedic insoles (also wedges), as the shoes are certified according to DGUV 112/191.

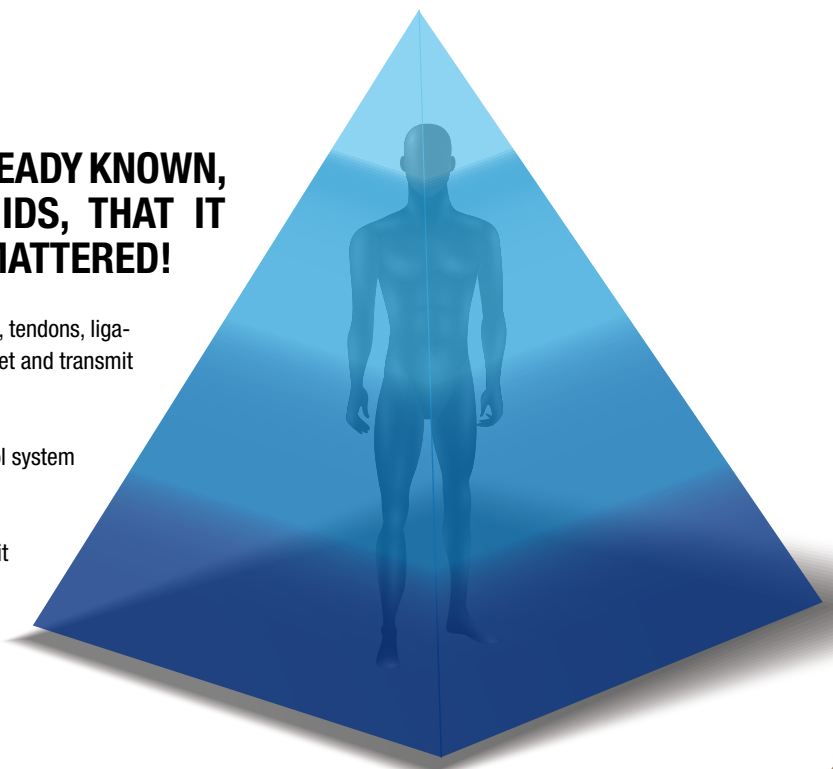
IN ANCIENT EGYPT, IT WAS ALREADY KNOWN, WHEN BUILDING THE PYRAMIDS, THAT IT WAS THE FOUNDATION THAT MATTERED!

Our foundation is our feet. They are made up of 26 bones, tendons, ligaments and muscles. 70,000 sensors are located at our feet and transmit information to us in milliseconds.

The conditions on the ground, the regulation in the control system works like a gyropod and doesn't let us down.

The strength of our company lies in the special attention it pays to the protection and health of the feet.

For the first time, the Technology of lamella soles in the shoe allows a more direct interaction between the ground and the foot.



the ORIGINAL





Outsole

- SRC slip resistance according to EN ISO 20347
- Resistant to fuel
- Cross & circle

Infobox

- Clog
- ESD (partially)
- FITTING - narrow-normal
- Available from size 35 - 48 (according to models)
- microfibre heel / insole (partially)
- Bestseller
- Light shoe



Technology

- Antistatic/ESD dissipative according to EN 61340-4-3 and EN 61340-5-1



Heel strap
adjustable, foldable



Heel strap fixed with
adjustable fastening



Perforation
for good ventilation

OB 77032 **OB**  377032

CE, EN ISO 20347 OB, A, E, FO, SRC
• size 35-43

UTGÅTT

FIXED HEEL STRAP

A more stable position and a high level of stability, very important for back support, protection against ankle torsion & individual width adjustment

MICROFIBRE HEEL PAD

Moisture-absorbing, for an optimal comfort, free of toxic substances, breathable, antimicrobial.

A-MICRO micro

Water-resistant and breathable. It is washable up to 30°C without shrinking and anti-bacterial. The structure of the material combines lightness and flexibility with robustness and tear resistance.



TPU OUTSOLE

SRC - Slip resistance and cushioning. Profile design with flex zones for high walking comfort. Particularly suitable on surfaces such as tiles and hall floors. Safe stance even on wet surfaces.

SUITABLE FOR KITCHENS

DGUV 110-002 (BGR)

DGUV 110-002 - tight fit to the foot, closed toe and heel area. Heels with large contact surface and low profile, high slip resistance anatomical insole.



• size 35-47



• size 35-43

OB UTGÅTT **OB**  UTGÅTT

OB UTGÅTT **OB**  UTGÅTT

CE, EN ISO 20347 OB, A, E, FO, SRC


• microfibre white/blue or white/berry • heel patch microfibre • heel strap adjustable, foldable • slip-resistant TPU outsole



 micro

*also
available
in ESD !*



OB 77022 **OB**  377022

CE, EN ISO 20347 OB, A, E, FO, SRC

- size 35-43 • microfibre white with pattern • heel patch microfibre
- heel strap adjustable, foldable • slip-resistant TPU outsole



 micro

**MICRO
FIBRE**



OB 77021



OB 77031



OB 77030



OB 77020

CE, EN ISO 20347 OB, A, E, FO, SRC

• size 35-47 • microfibre white or black, white perforated or black perforated • insole microfibre • heel strap foldable, adjustable • slip-resistant TPU outsole



A micro

**SMOOTH
LEATHER**



OB 7021



OB 7031



OB 7030



OB 7020

CE, EN ISO 20347 OB, FO, SRC

• size 35-48 • smooth leather white or black, white perforated or black perforated • insole leather • heel strap adjustable, foldable • slip-resistant outsole



77021



OB 7201 antistatic

CE, EN ISO 20347 OB, A, FO, SRC

• size 35-48 • smooth leather white/black with pattern • insole leather • heel strap adjustable, foldable • heel cushion • slip-resistant outsole



OB 7050

CE, EN ISO 20347 OB, FO, SRC

• size 35-48 • smooth leather white • insole leather • instep strap adjustable • slip-resistant outsole

**ANTI
STATIC**



• size 35-48

• size 35-43

• size 35-48

• size 35-43

OB 5013

OB 5081

OB 5007

OB 5080

CE, EN ISO 20347 OB, A, FO, SRC

• smooth leather white, white/mint, white perforated, white/mint perforated • heel patch leather • heel strap adjustable, foldable • slip-resistant outsole



OB 7091

OB 7081

OB 7090

OB 7080

CE, EN ISO 20347 OB, FO, SRC

• size 35-43 • smooth leather mint/white, blue/white, mint/white perforated or blue/white perforated • insole leather • heel strap adjustable, foldable • slip-resistant outsole

**ANTI
STATIC**



OB 7208



OB 7209

CE, EN ISO 20347 OB, A, FO, SRC

- size 35-48 • smooth leather white or black • insole leather
- heel strap fixed, removable • instep strap adjustable • lining extremely soft microfibre • heel cushion • slip-resistant outsole

high ORIGINAL

Infobox

- Clog
- ESD
- FITTING - narrow
- Available from size 36 - 42



Heel strap adjustable, foldable



Perforation for good ventilation



UTGÅTT

OB UTGÅTT
7001

OB  **5001** UTGÅTT

CE, EN ISO 20347 OB, A, E, FO, SRC

- size 36-42 • smooth leather white, perforated • heel patch leather
- heel strap adjustable, foldable • wedge heel 45 mm • narrow fit
- slip-resistant PU outsole



UTGÅTT

OB UTGÅTT
7008

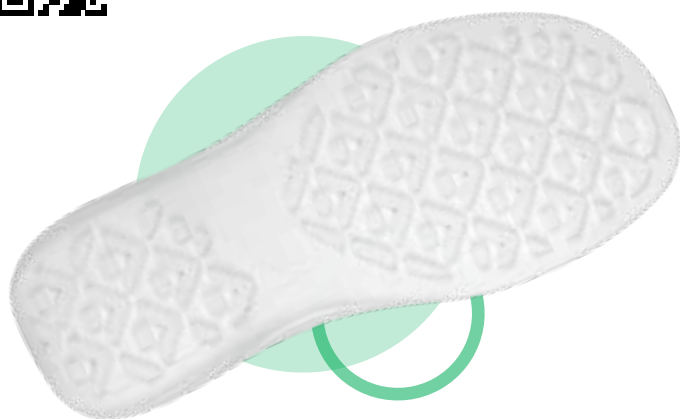
OB  **5008** UTGÅTT

CE, EN ISO 20347 OB, A, E, FO, SRC

- size 36-42 • smooth leather white, perforated • heel patch leather
- heel strap adjustable, foldable • wedge heel 45 mm • narrow fit
- slip-resistant PU outsole



the ORIGINAL 



Infobox

- Clog
- ESD
- FITTING - narrow-normal
- Available from size 36 - 42



Technology

- Antistatic/ESD dissipative according to EN 61340-4-3 and EN 61340-5-1



Heel strap adjustable, foldable



Perforation for good ventilation

Outsole

- SRC slip resistance according to EN ISO 20347
- TPU outsole, abrasion resistant
- Resistant to fuel



OB 7521

OB 7531

OB  37520

OB  37530

OB  37521

OB  37531

CE, EN ISO 20347 OB, A, E, FO, SRC

- size 36-42 • microfibre white, black, white perforated, black perforated
- heel patch microfibre • heel strap adjustable, foldable • slip-resistant TPU outsole





DYNAMIC





Outsole

- SRC slip resistance according to EN ISO 20347
- TPU outsole, abrasion resistant
- Resistant to fuel
- Flexing zones, walking comfort

Insole

- Replaceable **Active Comfort** insole (art. 352610), more information on page 122
- Suitable for orthopedic insoles



Infobox

- Clog
- ESD (partially)
- FITTING - narrow-normal
- Available from size 35 - 48 (according to models)



Technology

- Antistatic/ESD dissipative according to EN 61340-4-3 and EN 61340-5-1



Heel strap adjustable, foldable



Heel strap fixed with adjustable fastening



Perforation for good ventilation



CE, EN ISO 20347 OB, A, E, FO, SRC

- size 35-48 • smooth leather white, perforated • heel strap adjustable, foldable
- integrated footbed • slip-resistant TPU outsole

DGUV
112-191

OB 7351

OB  37351



OB 7310

OB  37310

CE, EN ISO 20347 OB, A, E, FO, SRC

- size 35-48 • smooth leather white, white/blue, white/red, black/brown with pattern • heel strap adjustable, foldable • replaceable Active Comfort insole (art. 352610) • slip-resistant TPU outsole



OB 7312

OB  37312



OB 7313

OB  37313



OB 7315

OB  37315



OB ~~7369~~ **UTGÅTT**

OB  ~~37369~~ **UTGÅTT**

CE, EN ISO 20347 OB, A, E, FO, SRC

- size 35-48 • microfibre white/black, white/blue, white/red, white, black
- heel strap fixed, adjustable • replaceable Active Comfort insole (art. 352610)
- slip-resistant TPU outsole



~~UTGÅTT~~ **OB** ~~7367~~

~~UTGÅTT~~ **OB**  ~~37367~~



~~UTGÅTT~~ **OB** ~~7368~~

~~UTGÅTT~~ **OB**  ~~37368~~



OB 7360

OB  37360



OB 7361

OB  37361



OB 7332

OB  37332

OB 7331

OB  37331

OB 7335

OB  37335

CE, EN ISO 20347 OB, A, E, FO, SRC

- size 35-48 • microfibre white/black, black/red, black/blue • seamless upper • heel strap fixed, adjustable
- replaceable Active Comfort insole (art. 352610) • slip-resistant TPU outsole



OB  37343

OB 7341

OB  37341

OB 7345

OB  37345

CE, EN ISO 20347 OB, A, E, FO, SRC

- size 35-48 • microfibre white/black, black/blue, black/yellow **with breathable textile inlays** • heel strap fixed, adjustable
- replaceable Active Comfort insole (art. 352610) • slip-resistant TPU outsole





**MICRO
FIBRE**



7320



37320

CE, EN ISO 20347 OB, A, E, FO, SRC

- size 35-43 • microfibre white with pattern • heel strap fixed, adjustable
- replaceable Active Comfort insole (art. 352610)
- slip-resistant TPU outsole



Amicro

art. 7326



FIXED HEEL STRAP

A more stable position and a high level of stability, very important for back support, protection against ankle torsion & individual width adjustment.

„ACTIVE COMFORT“ insole

replaceable, with anti odour activated carbon, cushioning effect, moisture release to the outside, antibacterial and antistatic / ESD-compatible according to EN 61340 .



KNITTED TEXTILE

Lightweight, stain-resistant, water repellent, dimensionally stable and washable at 30°C. Perfectly suited to the constraints of the Healthcare environment.



TPU OUTSOLE

SRC - Slip resistance and cushioning. Profile design with flex zones for for high walking comfort. Particularly suitable on surfaces such as tiles and hall floors. Safe stance even on wet surfaces.

SUITABLE FOR ORTHOPEDIC INSOLES

If customised orthopaedic insoles are required, Abeba shoes remain certified.



OB 7329

OB 7328

OB UTGÅTT

OB 7326

OB  **37329**

OB  **37328**

OB  **UTGÅTT**

OB  **37326**

CE, EN ISO 20347 OB, A, E, FO, SRC

- size 35-48 • knitted textile white, anthracite, burgundy, blue • protection against splash water
- heel strap fixed, adjustable • replaceable Active Comfort insole (art. 352610)
- slip-resistant TPU outsole





UTGÅTT

art.
7327

easy





Outsole

- SRC slip resistance according to EN ISO 20347
- TPU-Outsole, abrasion resistant
- Resistant to fuel
- Flexing zones, walking comfort

Insole

- Replaceable **Active Comfort** insole (art. 352710), more information on page 122
- Suitable for orthopedic insoles



Infobox

- Clog
- ESD (partially)
- FITTING - normal
- Available from size 35 - 48 (according to models)



Technology

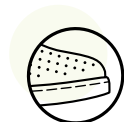
- Antistatic/ESD dissipative according to EN 61340-4-3 and EN 61340-5-1



Heel strap adjustable, foldable



Heel strap fixed with adjustable fastening



Perforation for good ventilation



OB 7630 **OB**  37630



OB 7631 **OB**  37631

CE, EN ISO 20347 OB, A, E, FO, SRC

- size 35-48 • smooth leather white, black, perforated • heel strap adjustable, foldable • replaceable Active Comfort insole (art. 352710)
- slip-resistant TPU outsole



OB 7621 **OB**  37621



OB 7620 **OB**  37620

CE, EN ISO 20347 OB, A, E, FO, SRC

- size 35-43 • microfibre patent black, white • heel strap fixed, adjustable • replaceable Active Comfort insole (art. 352710)
- slip-resistant TPU outsole



OB 7622 **OB**  37622

CE, EN ISO 20347 OB, A, E, FO, SRC

- size 35-48 • smooth leather white/blue • heel strap fixed, adjustable
- replaceable Active Comfort insole (art. 352710) • slip-resistant TPU outsole



**MICRO
FIBRE**



rubber





Outsole

- SRC slip resistance according to EN ISO 20347
- Rubber sole, abrasion resistant
- Resistant to fuel
- Cross & circle or Hexa4Grip

Infobox

- Clog
- ESD
- FITTING - normal
- Available from size 36 - 47



Technology

- Antistatic/ESD dissipative according to EN 61340-4-3 and EN 61340-5-1



Heel strap
adjustable, foldable



Heel strap fixed with
adjustable fastening



Perforation
for good ventilation



OB 9200 **OB**  5200



OB 9250 **OB**  5250



OB 9310 **OB**  5310



OB 9300 **OB**  5300

CE, EN ISO 20347 OB, A, FO, SRC

- size 36-47 • smooth leather white, navy blue, black perforated, white perforated • insole or heel patch leather • heel strap adjustable, foldable
- slip-resistant special rubber outsole



OB 9252



OB 9110

CE, EN ISO 20347 OB, A, FO, SRC

- size 36-47 • smooth leather black • insole leather • heel strap adjustable, foldable • slip-resistant special rubber outsole

CE, EN ISO 20347 OB, A, FO, SRC

- size 36-47 • smooth leather black • insole leather • heel strap fixed, adjustable • instep strap adjustable • slip-resistant special rubber outsole





OB 9100 **OB**  5100



OB 9150 **OB**  5150

CE, EN ISO 20347 OB, A, FO, SRC

• size 36-47 • smooth leather white, navy blue • insole or heel patch leather • heel strap fixed, adjustable • instep strap adjustable • slip-resistant special rubber outsole




**hexa4
GRIP**



OB 970111 **OB**  3970111



OB 970119 **OB**  3970119

CE, EN ISO 20347 OB, A, FO, SRC

• size 36-47 • microfibre white, black • heel patch microfibre
• midsole TPU • heel strap fixed, adjustable • instep strap adjustable
• hexa4GRIP-Outsole



Arrow





Outsole

- SRA slip resistance according to EN ISO 20347
- Double-layer PU-sole shock absorption, abrasion resistant
or
- Mono-PU-sole shock absorption, lightweight
- Resistant to fuel

Infobox

- Clog
- ESD
- FITTING - wide
- Available from size 36 - 51



Technology

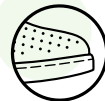
- Antistatic/ESD dissipative according to EN 61340-4-3 and EN 61340-5-1



Heel strap
adjustable, foldable




Heel strap fixed with
adjustable fastening





Perforation
for good ventilation



OB **8300** size 36-47 **OB**  **38300**
OB **8302** size 48-51 **OB**  **38302**



OB **8310** size 36-47 **OB**  **38310**
OB **8312** size 48-51 **OB**  **38312**

CE, EN ISO 20347 OB, A, FO, SRA

- microfibre white, black • heel patch microfibre • heel strap adjustable, foldable • lightweight Mono-PU-outsole



OB  **38330** size 36-47
OB  **38332** size 48-51

CE, EN ISO 20347 OB, A, FO, SRA

- microfibre black, perforated • heel patch microfibre • heel strap adjustable, foldable • lightweight Mono-PU-outsole



OB  **35600** size 36-47
OB  **35602** size 48-51

CE, EN ISO 20347 OB, A, FO, SRA

- smooth leather white, perforated • heel patch microfibre • lining microfibre, breathable, moisture absorbing • heel strap adjustable, foldable • slip-resistant PU outsole



OB **38200** size 36-47

OB **38202** size 48-51



OB **8210** size 36-47

OB **8212** size 48-51

OB **38210**

OB **38212**

CE, EN ISO 20347 OB, A, FO, SRA

- smooth leather white, black • heel patch microfibre • lining microfibre, breathable, moisture absorbing • heel strap adjustable, foldable
- slip-resistant PU outsole



OB **38600** size 36-47

OB **38602** size 48-51



OB **8400**

OB **38400**

CE, EN ISO 20347 OB, A, FO, SRA

- smooth leather white, perforated • heel patch microfibre • lining microfibre, breathable, moisture absorbing • heel strap fixed, adjustable • padded instep with elastic band • slip-resistant PU outsole

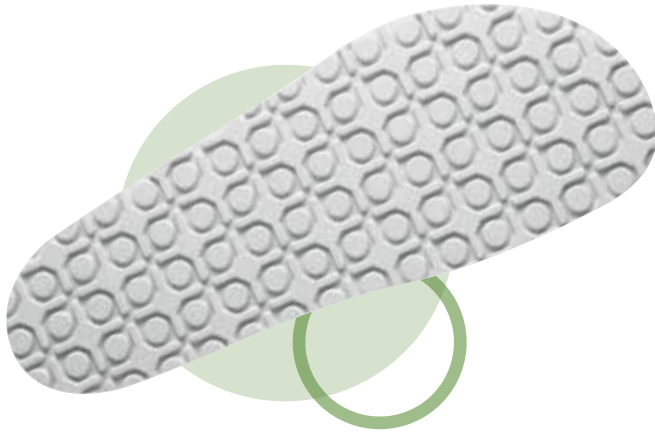
CE, EN ISO 20347 OB, A, FO, SRA

- size 36-47 • smooth leather white • heel patch microfibre • lining microfibre, breathable, moisture absorbing • heel strap fixed, adjustable • instep strap adjustable • slip-resistant PU outsole



NATURE





Outsole

- SRC slip resistance according to EN ISO 20347
- Rubber sole abrasion resistant
- Resistant to fuel

Technology

- Antistatic/ESD dissipative according to EN 61340-4-3 and EN 61340-5-1



Heel strap fixed with adjustable fastening



Perforation for good ventilation

Infobox

- Clog
- ESD
- FITTING - normal
- Available from size 34 - 48



Cork footbed

- leather covered
- Skin-friendly
- Moisture absorbing
- Toe grip
- Shock absorbing





OB 8040 **OB**  4040



OB 8045 **OB**  4055

CE, EN ISO 20347 OB, A, FO, SRC

- size 34-48 • smooth leather white, black • heel strap fixed, adjustable • instep strap adjustable • buckle fastening • slip-resistant special rubber outsole



OB  4045



OB  4050

CE, EN ISO 20347 OB, A, FO, SRC

- size 34-48 • smooth leather dark blue perforated, white perforated • heel strap fixed, adjustable • instep strap adjustable • buckle fastening • slip-resistant special rubber outsole



OB  4080



OB  4085

CE, EN ISO 20347 OB, A, FO, SRC

- size 34-48 • smooth leather white, black • 2 instep straps, adjustable • velcro fastening • slip-resistant special rubber outsole



OB  **4086**

CE, EN ISO 20347 OB, A, FO, SRC

- size 34-48 • velour blue • 2 instep straps, adjustable
- buckle fastening • slip-resistant special rubber outsole



OB  **4090**

CE, EN ISO 20347 OB, A, FO, SRC

- size 34-48 • smooth leather white • heel strap fixed, adjustable • 2 instep straps, adjustable • velcro fastening
- slip-resistant special rubber outsole



OB  **4096**

CE, EN ISO 20347 OB, A, FO, SRC

- size 34-48 • velour blue • heel strap fixed, adjustable • 2 instep straps, adjustable • buckle fastening • slip-resistant special rubber outsole

AUTO-CLAVABLE



Infobox

- Clog
- ESD
- FITTING - normal
- Available from size 35 - 46
- Autocwashable special material
- Autocwashable at 135°C, 5 min (no additives)
- Washable at 60°C (no additives)



Technology

- Antistatic/ESD dissipative according to EN 61340-4-3 and EN 61340-5-1



Heel strap adjustable, foldable



Outsole

- SRA slip resistance according to EN ISO 20347
- Sole abrasion resistant




OB 9600 **OB**  39600




OB 9620 **OB**  39620



OB 9610 **OB**  39610



OB 9630 **OB**  39630

CE, EN ISO 20347 OB, A, E, SRC

• Double size* 35/**36** - 45/**46** • special material white, green, blue, orange • heel strap adjustable, foldable • autoklavierbar • slip-resistant outsole



*Double size:

Please use size in bold when placing your order.

35/**36**, 37/**38**, 39/**40**, 41/**42**, 43/**44**, 45/**46**

Caution

To avoid any damage on the clogs they must not touch each other at any time during the autoclaving process.

DYNAMIC
flow





Outsole

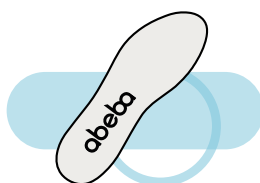
- SRC slip resistance according to EN ISO 20347
- TPU outsole abrasion resistant
- Resistant to fuel
- Flexing zones walking comfort

Technology

- Antistatic/ESD dissipative according to EN 61340-4-3 and EN 61340-5-1

Insole

- replaceable Active MediFit insole (art. 352630), more information on page 122
- Suitable for orthopedic insoles



Infobox

- low shoe
- ESD
- FITTING - normal
- Available from size 35 - 48 (according to models)
- Easy put on and off (partially)
- comfortable, light and breathable



Our new „MediFit“ insole is the result of continuous improvements of existing insoles. Our goal is to improve the health, well-being and comfort of the user with this insole!

When using this insole, the wearer is placed in the natural three-point position, which relieves the strain on the knees and back and allows the wearer to stand up straighter and more comfortably.

ELASTIC BAND FASTENING SYSTEM

Quick and easy fastening of the shoe.
Adjustable size

„ACTIVE MediFIT“ INSOLE

Replaceable, with activated carbon, stabilisation of the deep muscles, alignment of the wearer in the natural „three-point stance“, thereby reducing the strain on the knees and the back. The wearer stands comfortably and upright. Fatigue-free standing due to balanced load distribution. Antistatic or ESD-compatible according to EN 61340.



art.
7374

KNITTED TEXTILE

Lightweight, stain-resistant, water repellent, dimensionally stable and washable at 30°C. Perfectly suited to the constraints of the Healthcare environment.



TPU Outsole

SRC - slip resistance and cushioning. Profile design with flex zones for high walking comfort. Particularly suitable on surfaces such as tiles and hall floors. Safe stance even on wet surfaces.

SUITABLE FOR ORTHOPEDIC INSOLES

If customised orthopaedic insoles are required, Abeba shoes remain certified.



01 7376

01  37376



01 7374

01  37374

01 7375

01  37375

CE, EN ISO 20347 01, FO, SRC

- size 35-48 • knitted textile anthracite, black, burgundy • stretch white fabric • protection against splash water • double elastic band fastening system • replaceable Active MediFit insole (art. 352630)
- slip-resistant TPU outsole





**MICRO
FIBRE**



UTGÅTT

01 UTGÅTT
7576

01  UTGÅTT
3576

CE, EN ISO 20347 01, FO, SRC

- size 35-43 • microfibre white, perforated • lining with silver ions
- replaceable Active MediFit insole (art. 352630)
- slip-resistant TPU outsole



air
cushion





Outsole

- SRA slip resistance according to EN ISO 20347
- Air cushion PU-sole shock absorption
- Extrem light sole

Insole

- replaceable insole (art. 3551), more information on page 122



Infobox

- low shoe
- ESD
- FITTING - narrow-normal
- Available from size 35 - 47
- Lining microfibre, breathable, moisture absorbing



Technology

- Antistatic/ESD dissipative according to EN 61340-4-3 and EN 61340-5-1



Perforation
for good ventilation



02 **UTGÅTT** **02**  **32700**




02 **UTGÅTT** **02**  **32710**


CE, EN ISO 20347 02, SRA

- size 39-47 • grained leather white, black • lining microfibre, breathable, moisture absorbing
- replaceable insole (art. 3551) • slip-resistant PU outsole



02 **2610** **02**  **32610**




02 **2600** **02**  **32600**

CE, EN ISO 20347 02, SRA

- size 35-47 • grained leather black, white • lining microfibre, breathable, moisture absorbing • replaceable insole (art. 3551)
- slip-resistant PU outsole



01 **2370** **01**  **32370**

CE, EN ISO 20347 01, SRA

- size 35-47 • microfibre white • instep area with elastic band • integrated footbed
- washable • slip-resistant PU outsole





01  **32300** • size 35-47



01  **32310** • size 39-47

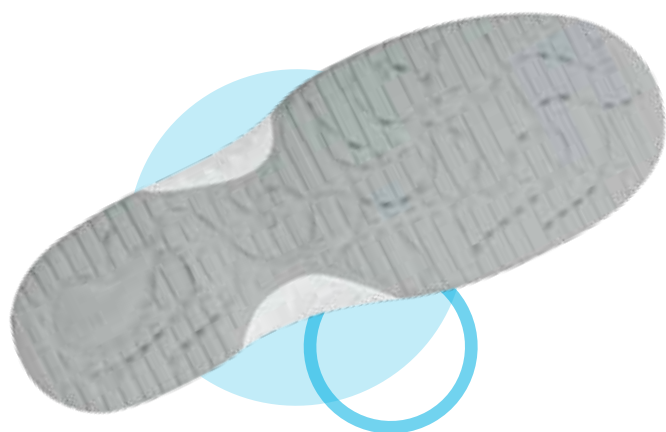
CE, EN ISO 20347 01, SRA

- grained leather white, black, perforated • lining microfibre, breathable, moisture absorbing • replaceable insole (art. 3551)
- slip-resistant PU outsole



uni6





Outsole

- SRC slip resistance according to EN ISO 20347
- TPU outsole, abrasion resistant
- Resistant to fuel
- Flexing zones walking comfort

Insole

- Replaceable Active Comfort insole (art. 352510), more information on page 122
- Suitable for orthopedic insoles



Infobox

- low shoe
- ESD
- FITTING - normal
- Available from size 35 - 48 (according to models)
- Special lining, breathable, moisture absorbing
- Soft PU midsole



Shoelaces

- Set in 3 colours (red, blue and green), length 80 cm for low shoes, suitable for all low lace-up shoes
- art. 370118




Technology

- Antistatic/ESD dissipative according to EN 61340-4-3 and EN 61340-5-1



02  36740




02 6741 02  36741

CE, EN ISO 20347 02, FO, SRC

- size 35-48 • microfibre white, black • lining with silver ions • instep area with elastic band • replaceable Active Comfort insole (art. 352510)
- slip-resistant TPU outsole



01 **UTGÅTT** 6795 01  **UTGÅTT** 36795

CE, EN ISO 20347 01, FO, SRC

- size 35-48 • microfibre white • lining microfibre, breathable, moisture absorbing • instep area with velcro fastening • replaceable Active Comfort insole (art. 352510) • slip-resistant TPU outsole



02 **UTGÅTT** 6766 02  **UTGÅTT** 36766

CE, EN ISO 20347 02, FO, SRC

- size 35-43 • microfibre white with coloured lacing • lining with silver ions • replaceable Active Comfort insole (art. 352510) • slip-resistant TPU outsole • **incl. white exchange laces**





02 6728

02  36728



02 6729

02  36729

CE, EN ISO 20347 02, FO, SRC

- size 35-48 • microfibre-textile white, black with pattern • water-repellent
- lining with silver ions • replaceable Active Comfort insole (art. 352510)
- slip-resistant TPU outsole



LACES FASTENING

Optimal and individual adaptation to the foot. A well-fitting shoe reduces the risk of falls and accidents.

MICROFIBRE LINING

Moisture-absorbing, for optimum comfort. Free of toxic substances, breathable, anti-microbial, anti-odour and tear resistant. Certified according to the strict test procedure „Standard 100 by OEKO-TEX“.

KNITTED TEXTILE

Lightweight, stain-resistant, water repellent & dimensionally stable, washable at 30°C, it is perfectly suited to the constraints of catering.



„ACTIVE COMFORT“ INSOLE

Replaceable, with activated carbon, good cushioning, absorbs moisture and wicks it away.



art.
6776



TPU OUTSOLE

SRC - slip resistance and cushioning. Profile design with flex zones for high walking comfort. Particularly suitable on surfaces such as tiles and hall floors. Safe stance even on wet surfaces.

SOFT-PU-MIDSOLE

Uniform cushioning over the entire foot surface with arch support. Allows return and energy saving with every step.

SUITABLE FOR ORTHOPEDIC INSOLES

If customised orthopaedic insoles are required, Abeba shoes remain certified



02 6775

02  36775



• incl. blue laces

02 6774

02  36774



02 6773

02  36773



02 6772

02  36772



02 6776

02  36776


CE, EN ISO 20347 02, FO, SRC

• size 35-48 • knitted textile anthracite, orange, blue, white, black • protection against splash water
• lining with silver ions • replaceable Active Comfort insole (art. 352510) • slip-resistant TPU outsole







01 6760 01  36760



02 6761 02  36761

CE, EN ISO 20347 01/02, FO, SRC

- size 35-48 • functional leather with honeycomb pattern white, black • water-repellent • scratch-resistant • lining with silver ions • replaceable Active Comfort insole (art. 352510) • slip-resistant TPU outsole




01  36721

CE, EN ISO 20347 01, FO, SRC

- size 35-48 • Velour black with **breathable textile inlays**
- lining with silver ions • replaceable Active Comfort insole (art. 352510)
- slip-resistant TPU outsole



02 6750 02  36750

CE, EN ISO 20347 02, FO, SRC

- size 35-48 • smooth leather white • lining microfibre, breathable, moisture absorbing • replaceable Active Comfort insole (art. 352510)
- slip-resistant TPU outsole





UTGÅTT



UTGÅTT

02

UTGÅTT
6787

02



UTGÅTT
36787



02

6780

02



36780



02

6781

02



36781

02

UTGÅTT
6786

02



UTGÅTT
36786

CE, EN ISO 20347 02, FO, SRC

- size 35-48 • microfibre white/blue, white/black, white, black • lining with silver ions
- replaceable Active Comfort insole (art. 352510) • slip-resistant TPU outsole



BUSINESS

Infobox

- low shoe
- ESD
- FITTING - normal
- Available from size 35 - 47 (according to models)



UTGÅTT

UTGÅTT



UTGÅTT

01



UTGÅTT
300219

CE, EN ISO 20347 01, FO, SRC

• size 35-43 • microfibre black in leather optic • lining microfibre, breathable, moisture absorbing • instep area with lacing • slip-resistant PU/rubber outsole



UTGÅTT

01



UTGÅTT
300119

CE, EN ISO 20347 01, FO, SRC

• size 35-43 • microfibre black in leather optic • lining microfibre, breathable, moisture absorbing • instep area with elastic band • slip-resistant PU/rubber outsole





UTGÅTT

01  UTGÅTT
32430

CE, EN ISO 20347 01, SRB

• size 40-47 • smooth leather black • lining microfibre, breathable, moisture absorbing • heel patch microfibre • slip-resistant ESD dissipative rubber outsole



01  32450

CE, EN ISO 20347 01, SRB

• size 40-47 • smooth leather black • lining microfibre, breathable, moisture absorbing • heel patch microfibre • slip-resistant ESD dissipative rubber outsole



 3120

• size 39-47 • calf leather black • lining microfibre, breathable, moisture absorbing • insole microfibre • ESD dissipative leather outsole



 UTGÅTT
3940

• size 36-42 • smooth leather black • lining microfibre, moisture absorbing • heel 60 mm • ESD dissipative TPU outsole



01 3030

CE, EN ISO 20347 01, FO, SRB

• size 36-42 • smooth leather black • lining microfibre, breathable, moisture absorbing • instep area with velcro fastening • integrated acc-wave footbed • slip-resistant outsole



3000

• size 34-42 • smooth leather black • padded ankle support • instep area with lacing • comfort footbed • heel 45 mm • slip-resistant outsole

x-light





Outsole

- SRC slip resistance according to EN ISO 20347
- PU outsole lighter, more stable and abrasion resistant
- Resistant to fuel
- Cushioning effect optimised
- Responsive cushioning

Technology

- Antistatic/ESD dissipative according to EN 61340-4-3 and EN 61340-5-1



Heel strap adjustable, foldable



Heel strap fixed with adjustable fastening

Shoelaces

- Set in 3 colours (red, blue and green), length 80 cm for low shoes, suitable for all low lace-up shoes
- art. 370118



Infobox

- Clog and low shoe
- ESD
- FITTING - normal
- Available from size 35 - 48



Insole

- replaceable Active Comfort insole (art. 351610 - closed, art. 351710 - open), more information on page 122
- Suitable for orthopedic insoles





OB **UTGÅTT**
711141

OB  **7131141**



OB  **7131142**

CE, EN ISO 20347 OB, A, E, FO, SRC

- size 35-48 • smooth leather white, black • lining with silver ions • heel strap adjustable, foldable • instep area with elastic band • replaceable Active Comfort insole (art. 351710) • slip-resistant PU outsole



OB **711135**

OB  **7131135**



OB **711130**

OB  **7131130**

CE, EN ISO 20347 OB, A, E, FO, SRC

- size 35-48 • smooth leather black, white • lining with silver ions • heel strap fixed, adjustable • instep area with elastic band • replaceable Active Comfort insole (art. 351710) • slip-resistant PU outsole



01 **711131**

01  **7131131**



01  **7131136**

CE, EN ISO 20347 01, FO, SRC

- size 35-48 • smooth leather white, black **with grey breathable textile inlays** • lining with silver ions • double velcro fastening • replaceable Active Comfort insole (art. 351610) • slip-resistant PU outsole




**MICRO
FIBRE**



02 **UTGÅTT** **02**  **UTGÅTT**
711129 **7131129**



02 **UTGÅTT** **02**  **UTGÅTT**
711128 **7131128**

CE, EN ISO 20347 02, FO, SRC

- size 35-48 • microfibre black, white • lining with silver ions
- instep area with elastic band • replaceable Active Comfort insole (art. 351610) • slip-resistant PU outsole



A-MICRO  micro

Both water-repellent and breathable. Washable at 30°C without shrinkage and antibacterial. Particularly soft and light, highly tear-resistant. Does not yellow under UV light.



02 **UTGÅTT**
711100

02  **UTGÅTT**
7131100

CE, EN ISO 20347 02, FO, SRC

• size 35-48



MICROFIBRE LINING

Moisture-absorbing, for optimum comfort. Free of toxic substances, breathable, antimicrobial, anti-odour and tear resistant. Certified according to the strict test procedure „Standard 100 by OEKO-TEX“.



UTGÅTT

„ACTIVE COMFORT“INSOLE

Replaceable, with activated carbon, good cushioning, absorbs moisture and wicks it away.



OPTIMISED FIT

Wide forefoot area to avoid irritating the toes and reduce pressure points.

TEXTILE MESH

Air permeable and breathable. Keeps feet dry and ensures a healthy environment in the shoe.


PU OUTSOLE

SRC - slip resistance, flexible and durable, resistant to fuels, very good cushioning for comfortable and healthy feet. Robust outsole profile.

ORTHOPAEDIC INSOLE AND SOLE ELEVATION POSSIBLE

If customised orthopaedic insoles are required, Abeba shoes remain certified.



01 **UTGÅTT** **01**  **UTGÅTT**
711150 **7131150**

CE, EN ISO 20347 01, FO, SRC

- size 35-48 • velour microfibre black/neon orange • lining breathable and moisture absorbing • replaceable Active Comfort insole (art. 351610)
- slip-resistant PU outsole



02 **UTGÅTT** **02**  **UTGÅTT**
711160 **7131160**

CE, EN ISO 20347 02, FO, SRC

- size 35-48 • Cordura black/neongelb • lining breathable and moisture absorbing • replaceable Active Comfort insole (art. 351610) • slip-resistant PU outsole



**MICRO
FIBRE**



UTGÅTT

02 **UTGÅTT**
711101  micro

02  **UTGÅTT**
713101  micro

CE, EN ISO 20347 02, FO, SRC

• size 35-48 • microfibre black • lining microfibre, breathable, moisture absorbing • replaceable Active Comfort insole (art. 351610) • slip-resistant PU outsole



DGUV
112-191





02 711132



02 711137

02 7131132

02 7131137

CE, EN ISO 20347 02, FO, SRC

- size 35-48 • smooth leather white, black • lining with silver ions • instep area with elastic band • replaceable Active Comfort insole (art. 351610) • slip-resistant PU outsole



02 UTGÅTT 711146



02 UTGÅTT 711147

02 UTGÅTT 7131146

02 UTGÅTT 7131147

CE, EN ISO 20347 02, FO, SRC

- size 35-48 • microfibre black, white • lining with silver ions • double velcro fastening • replaceable Active Comfort insole (art. 351610) • scuff resistant overcap • slip-resistant PU outsole



01 UTGÅTT 7131158



01 UTGÅTT 7131156

CE, EN ISO 20347 01, FO, SRC

- size 35-48 • smooth leather white with **breathable textile inlays**
- lining with silver ions • replaceable Active Comfort insole (art. 351610)
- slip-resistant PU outsole



CE, EN ISO 20347 01, FO, SRC

- size 35-48 • smooth leather black with **breathable textile inlays**
- lining with silver ions • replaceable Active Comfort insole (art. 351610)
- slip-resistant PU outsole





01 **UTGÅTT**
711161 • size 35-48



01 **UTGÅTT**
711162 • size 35-43

CE, EN ISO 20347 01, FO, SRC

- textile green, textile pattern green/white • water-repellent • lining with silver ions • replaceable Active Comfort insole (art. 351610)
- slip-resistant PU outsole



02 **711126**

02  **7131126**



02 **711127**

02  **7131127**

CE, EN ISO 20347 02, FO, SRC

- size 35-48 • microfibre white, black • lining with silver ions • replaceable Active Comfort insole (art. 351610) • slip-resistant PU outsole



 micro



02 **711138**

02  **7131138**



02 **711133**

02  **7131133**

CE, EN ISO 20347 02, FO, SRC

- size 35-48 • smooth leather black, white • lining with silver ions • reflective stripes • replaceable Active Comfort insole (art. 351610)
- slip-resistant PU outsole





02 **UTGÅTT**  711124

02  **UTGÅTT**  7131124

CE, EN ISO 20347 02, FO, SRC

• size 35-48 • microfibre-textile white • water-repellent • lining with silver ions • replaceable Active Comfort insole (art. 351610) • slip-resistant PU outsole



Reflexor
&
Reflexor
COMFORT





Insoles

REFLEXOR:

- Replaceable Reflexor® insoles (art. 3567, art. 3568, art. 3569, art. 3570, art. 3565 / 3566, art. 3585 / 3586), more information on page 122/123
- Reflexor - Suitable for orthopedic insoles

REFLEXOR COMFORT:

- replaceable Reflexor® massage active-footbed (art. 3584, art. 3572), more information on page 122



Outsole

- SRB slip resistance according to EN ISO 20347
- PU outsole, extremely light

Infobox

- Clog und low shoe
- ESD
- FITTING
Reflexor - normal
Reflexor Comfort - wide
- Available from size 36 - 46 (according to models)



Technology

- Antistatic/ESD dissipative according to EN 61340-4-3 and EN 61340-5-1



Hand-sewn seam
for best walking comfort



OB  **36902**



OB  **36912**

CE, EN ISO 20347 OB A, E, SRB

- size 36-42 • smooth leather white, black • lining microfibre, breathable, moisture absorbing • triple velcro fastening
- 2 replaceable Reflexor® insoles (art. 3585/3567-white) / (art. 3565/3568-black) • slip-resistant PU outsole



UTGÅTT  **31092**



UTGÅTT  **31094**

- size 36-42 • smooth leather black, white • lining microfibre, breathable, moisture absorbing • integrated Reflexor® massage footbed • slip-resistant PU outsole



OB **6903**  **36903**



UTGÅTT  **31064**

CE, EN ISO 20347 OB, A, E, SRB

- size 36-42 • smooth leather white • lining microfibre, breathable, moisture absorbing • heel strap adjustable, foldable • instep area with elastic band • 2 replaceable Reflexor® insoles (art. 3585/3567) • slip-resistant PU outsole



- size 36-42 • smooth leather white/black • lining microfibre, breathable, moisture absorbing • heel strap fixed, adjustable • instep area with elastic band • integrated Reflexor® massage footbed • slip-resistant PU outsole



01 5700

01  35700



01 5710

01  35710

CE, EN ISO 20347 01, SRB

• size 40-46 • smooth leather white, black • lining microfibre, breathable, moisture absorbing • 2 replaceable Reflexor® insoles (art. 3586/3569-white) / (art. 3566/3570-black) • slip-resistant PU outsole



Reflexor COMFORT



OB  36872



OB 6874

OB  36874

CE, EN ISO 20347 OB, A, E, SRB

• size 36-43 • Velour black, smooth leather white • lining microfibre, breathable, moisture absorbing • heel strap fixed, adjustable • instep area with elastic band • replaceable Reflexor® insole (art. 3572-black) / (art. 3584-white) • slip-resistant PU outsole



OB  **UTGÅTT**
36819



OB  36813

CE, EN ISO 20347 OB, A, E, SRB

• size 36-43 • smooth leather black • lining microfibre, breathable, moisture absorbing • double velcro fastening • replaceable Reflexor® insole (art. 3572) • slip-resistant PU outsole



CE, EN ISO 20347 OB, A, E, SRB

• size 36-43 • smooth leather black • lining microfibre, breathable, moisture absorbing • heel strap adjustable, foldable • instep area with elastic band • replaceable Reflexor® insole (art. 3572) • slip-resistant PU outsole



CLEAN ROOM





3900



3910

- size* 1 - 5 • white, blue • upper integrity 1750 antibacterial • washable in industrial washing up to 60°C
- artificial leather sole • overshoe with elastic instep



*size:

- 1 = 36-37
- 2 = 38-39
- 3 = 40-43
- 4 = 44-46
- 5 = 47-48



3620

CE, EN ISO 20347 01, SRA

- size 35-47 • microfibre white • fixed gaiter, cleanroom textile



individual solutions on request

The special shoe shown above is only an example of an individual solution. Tell us about your requirements and together we will find the solutions which best suits to them within a short time. Please contact us at abeba@abeba.de

Classic



Infobox

- Clog und low shoe
- ESD
- Available from size 36 - 46
- Resistant to fuel





SB 1000 **SB**  31000



SB 1010 **SB**  31010

CE, EN ISO 20345 SB, A, E, FO, SRC

- size 36-46 • grained leather white, grained leather black • lining microfibre, breathable, moisture absorbing
- heel patch microfibre • heel strap fixed, adjustable • instep strap adjustable • buckle fastening • slip-resistant PU outsole



SB 1011 **SB**  31011



SB 1001 **SB**  31001

CE, EN ISO 20345 SB, A, E, FO, SRC

- size 36-46 • microfibre black, microfibre white • lining microfibre, breathable, moisture absorbing • heel patch microfibre
- heel strap fixed, adjustable • instep strap adjustable • buckle fastening • slip-resistant PU outsole



S2 1500

CE, EN ISO 20345 S2, SRC

- size 36-46 • grained leather white • lining microfibre, breathable, moisture absorbing • heel patch microfibre • instep strap adjustable • slip-resistant PU outsole



x-light





Outsole

- SRC slip resistance according to EN ISO 20345
- PU outsole lighter, more stable and abrasion resistant
- Resistant to fuel
- cushioning effect optimised
- Responsive cushioning (except S3 models)

Technology

- Antistatisch/ESD dissipative nach EN 61340-5-1 und EN 61340-4-3



Heel strap adjustable, foldable



Heel strap fixed with adjustable fastening

Shoelaces

- Set in 3 colours (red, blue and green), length 80 cm for low shoes, suitable for all low lace-up shoes
- art. 370118



Infobox

- Clog and low shoe
- ESD
- FITTING - normal
- Available from size 35 - 48



Insole

- replaceable Active Comfort insole (art. 351620 - closed, art. 351720 - open), more information on page 122
- Suitable for orthopedic insoles





SB

711041

SB



7131041



SB

711042

SB



7131042

CE, EN ISO 20345 SB, A, E, FO, SRC

- size 35-48 • smooth leather white, smooth leather black • lining with silver ions • heel strap adjustable, foldable • instep area with elastic band
- replaceable Active Comfort insole (art. 351720) • slip-resistant PU outsole



DGUV
112-191



SB

711035

SB



7131035



SB

711030

SB



7131030

CE, EN ISO 20345 SB, A, E, FO, SRC

- size 35-48 • smooth leather black, smooth leather white • lining with silver ions • heel strap fixed, adjustable • instep area with elastic band
- replaceable Active Comfort insole (art. 351720) • slip-resistant PU outsole



DGUV
112-191



S1

711031

S1



7131031



S1

711036

S1



7131036

CE, EN ISO 20345 S1, SRC

- size 35-48 • smooth leather white, smooth leather black with **grey breathable textile inlays** • lining with silver ions
- double velcro fastening • replaceable Active Comfort insole (art. 351620) • slip-resistant PU outsole



DGUV
112-191





S1  **7131058**




S1  **7131056**

CE, EN ISO 20345 S1, SRC

• size 35-48 • smooth leather white, smooth leather black with **breathable textile inlays** • lining with silver ions • replaceable Active Comfort insole (art. 351620) • slip-resistant PU outsole



S2 **UTGÅTT** **711046** **S2**  **7131046**




S2 **711047** **S2**  **7131047**

CE, EN ISO 20345 S2, SRC

• size 35-48 • microfibre black, microfibre white • lining with silver ions • double velcro fastening • replaceable Active Comfort insole (art. 351620) • scuff resistant overcap • slip-resistant PU outsole



S1 **UTGÅTT** **711020** **S1**  **7131020**



S1 **UTGÅTT** **711050** **S1**  **7131050**

CE, EN ISO 20345 S1, SRC

• size 35-48 • microfibre anthracite/black and 3D mesh blue/grey • lining with silver ions • blue elastic band • replaceable Active Comfort insole (art. 351620) • slip-resistant PU outsole



CE, EN ISO 20345 S1, SRC

• size 35-48 • velour microfibre black/neon orange • replaceable Active Comfort insole (art. 351620) • slip-resistant PU outsole



S3 **UTGÅTT**
711860

S3  **7131860**

CE, EN ISO 20345 S3, SRC
• size 35-48

STEEL TOE CAP

Robust material, extremely resistant to impact and compression.



SACES FASTENING

Optimal and individual fitting to the foot. A well-fitted shoe reduces the risk of falls and accidents.



„ACTIVE COMFORT“ INSOLE

Replaceable, with activated carbon, good cushioning, absorbs moisture and wicks it away.



OPTIMISED FIT

Wide forefoot area to avoid irritating the toes and reduce pressure points.

METAL FREE ANTIPUNCTURE MIDSOLE

Puncture resistant and water resistant. Prevents the penetration of external objects.



PU OUTSOLE

SRC - slip resistance, flexible and hard-wearing, resistant to fuels, good cushioning for great foot comfort. Well-profiled outsole.



ORTHOPAEDIC INSOLE AND SOLE ELEVATION POSSIBLE

If customised orthopaedic insoles are required, Abeba shoes remain certified



UTGÅTT



S3 **UTGÅTT** **S3**  **UTGÅTT**
711827 **7131827**

CE, EN ISO 20345 S3, SRC

• size 35-48 • microfibre-textile black • water-repellent • lining with silver ions • replaceable Active Comfort insole (art. 351620) • metal free penetration resistance • slip-resistant PU outsole





S2 711028

S2  7131028



S2 711029

S2  7131029

CE, EN ISO 20345 S2, SRC

- size 35-48 • microfibre white, microfibre black • lining with silver ions • instep area with elastic band • replaceable Active Comfort insole (art. 351620) • slip-resistant PU outsole



S2 711037

S2  7131037



S2 711032

S2  7131032

CE, EN ISO 20345 S2, SRC

- size 35-48 • smooth leather black, smooth leather white • lining with silver ions • instep area with elastic band • replaceable Active Comfort insole (art. 351620) • slip-resistant PU outsole



S2 711026

S2  7131026



S2 711027

S2  7131027

CE, EN ISO 20345 S2, SRC

- size 35-48 • microfibre white, microfibre black • lining with silver ions • replaceable Active Comfort insole (art. 351620) • slip-resistant PU outsole



also
available as
S3



S2 711038



7131038

S3 711874

UTGÅTT



7131874



S2 711033



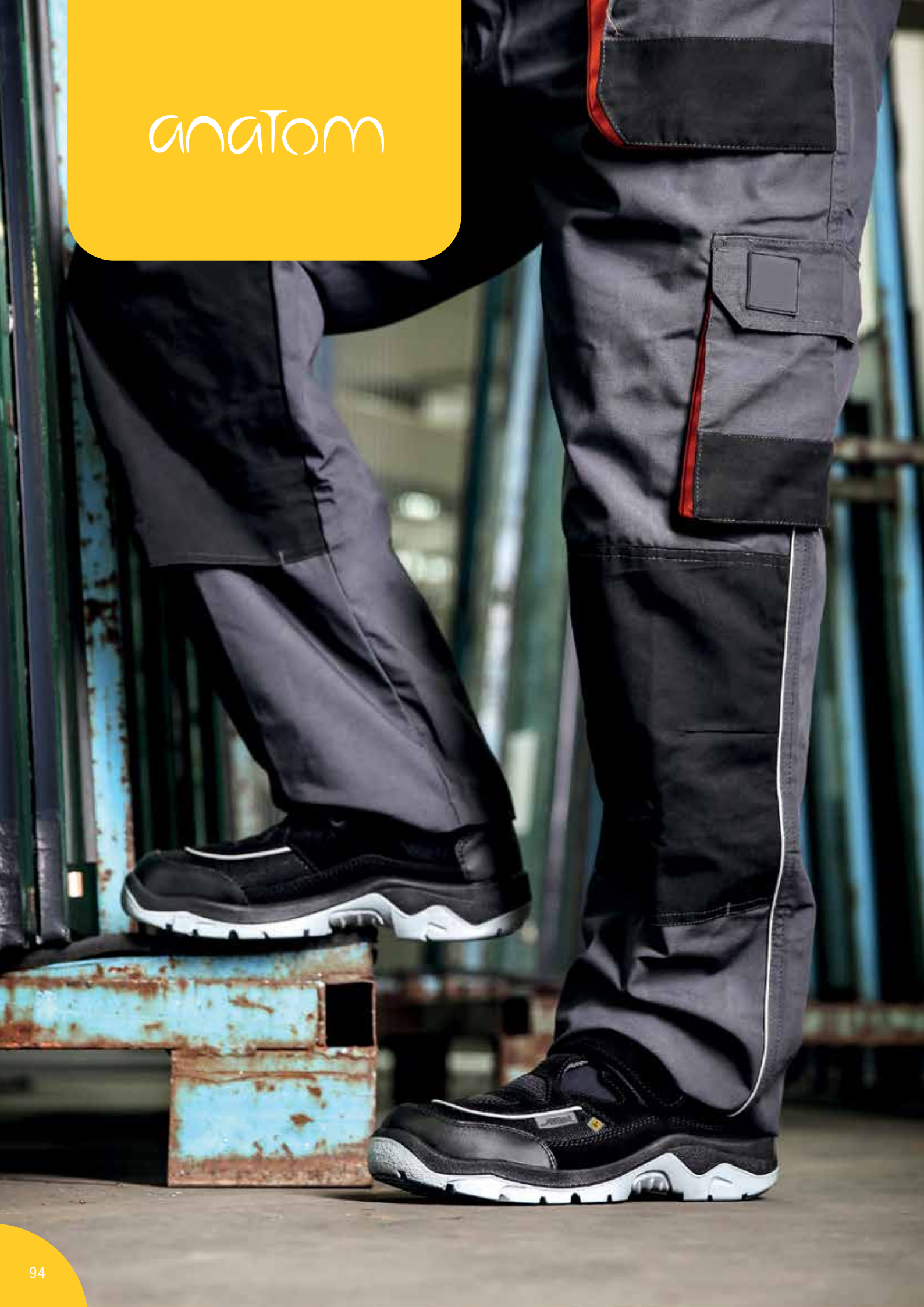
7131033

CE, EN ISO 20345 S2 / S3, SRC

- size 35-48 • smooth leather black, smooth leather white • lining with silver ions
- reflective stripes • replaceable Active Comfort insole (art. 351620)
- metal free penetration resistance as S3 • slip-resistant PU outsole



anatom





Outsole

- SRC slip resistance according to EN ISO 20345
- PU-Outsole, abrasion resistant
- Self cleaning profile
- TPU anti-torsion inserts
- Protection from ankle twisting
- Resistant to fuel
- Responsive cushioning (except S3 and S1P models)

Technology

- Antistatic/ESD dissipative according to EN 61340-4-3 and EN 61340-5-1



Asymmetrical heel



Heel strap fixed with adjustable fastening

Shoelaces

- Set in 3 colours (red, blue and green), length 80 cm for low shoes, length 100 cm for boot, suitable for all low lace-up shoes
- art. 370118 (80 cm)
- art. 370110 (100 cm)



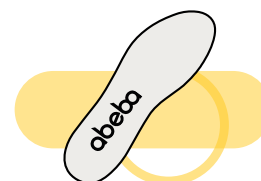
Infobox

- Clog, low shoe and boot
- ESD
- FITTING - wide
- Available from size 36 - 52
- Soft PU midsole



Insole

- replaceable Active Comfort insole (art. 352420 - open, art. 352320 - closed), more information on page 122
- Suitable for orthopedic insoles





SB 2120

SB  32120

SB 2125

SB  32125

CE, EN ISO 20345 SB, A, E, FO, SRC

• size 36-52 • microfibre white, microfibre black • lining with silver ions • heel strap fixed, adjustable • instep strap adjustable, with elastic band • replaceable Active Comfort insole (art. 352420) • slip-resistant PU outsole



 micro



S2 2130

S2  32130



S2 2135

S2  32135

CE, EN ISO 20345 S2, SRC

• size 36-52 • microfibre white, microfibre black • lining with silver ions • instep strap adjustable, with elastic band • replaceable Active Comfort insole (art. 352320) • slip-resistant PU outsole



S2 2136

S2  32136



S2 2131

S2  32131

CE, EN ISO 20345 S2, SRC

• size 36-50 • microfibre black, microfibre white • lining with silver ions • replaceable Active Comfort insole (art. 352320) • slip-resistant PU outsole



S1  2616



S1  2626

CE, EN ISO 20345 S1, SRC

• size 36-50 • microfibre white, **perforated** • lining with silver ions • double velcro fastening • reflective stripes • replaceable Active Comfort insole (art. 352320) • slip-resistant PU outsole



CE, EN ISO 20345 S1, SRC

• size 36-52 • microfibre white with **breathable textile inlays** • lining with silver ions • reflective stripes • replaceable Active Comfort insole (art. 352320) • slip-resistant PU outsole





S2 **UTGÅTT** **2140** **S2** **32140**

CE, EN ISO 20345 S2, SRC

- size 36-48 • microfibre white • lining with silver ions
- double velcro fastening • replaceable Active Comfort insole (art. 352320) • slip-resistant PU outsole



micro



S2 **32156**

CE, EN ISO 20345 S2, SRC

- size 36-50 • smooth leather black • lining with silver ions
- scratch-resistant coating in heel and toe area • reflective stripes
- replaceable Active Comfort insole (art. 352320) • slip-resistant PU outsole



S1 **1122**

CE, EN ISO 20345 S1, SRC

- size 36-50 • velour black **with breathable textile inlays** • lining with silver ions • replaceable Active Comfort insole (art. 352320) • slip-resistant PU outsole



S3 **32256**

CE, EN ISO 20345 S3, SRC

- size 36-52 • smooth leather black • lining with silver ions
- scratch-resistant coating in heel and toe area • reflective stripes • replaceable Active Comfort insole (art. 352320) • metal free penetration resistance • slip-resistant PU outsole



also
available as
S1P

S1 **32189**

S1P **32289** **UTGÅTT**

CE, EN ISO 20345 S1 / S1P, SRC

- size 36-52 • velour black with **breathable textile inlays** • lining with silver ions • instep strap adjustable • reflective stripes • replaceable Active Comfort insole (art. 352320) • metal free penetration resistance as S1P • slip-resistant PU outsole



S1 **32147**
size 36-50

S1P **32247**
size 36-48

CE, EN ISO 20345 S1 / S1P, SRC

- velour navy blue with **breathable textile inlays** • lining with silver ions
- scratch-resistant coating in heel area • reflective stripes • replaceable Active Comfort insole (art. 352320) • metal free penetration resistance as S1P • slip-resistant PU outsole



METAL FREE ANTIPUNCTURE MIDSOLE
S1P / S3



UTGÅTT



UTGÅTT

S1P **UTGÅTT** **S1P** **UTGÅTT**
2283 32283

S1P **UTGÅTT** **S1P** **UTGÅTT**
2282 32282

CE, EN ISO 20345 S1P, SRC

- size 36-52 • Cordura® Textile yellow/green with dot pattern, blue with dot pattern • water-, abrasion- and tear-resistant • lining with silver ions
- reflective stripes • double velcro fastening • replaceable Active Comfort insole (art. 352320) • metal free penetration resistance
- slip-resistant PU/PU outsole



UTGÅTT



UTGÅTT

S3 **UTGÅTT** **S3** **UTGÅTT**
2251 32251

S3 **UTGÅTT** **S3** **UTGÅTT**
2252 32252

CE, EN ISO 20345 S3, SRC

- size 36-52 • Cordura® Textile yellow/green with dot pattern, blue with dot pattern • water-, abrasion- and tear-resistant • lining with silver ions • reflective stripes • replaceable Active Comfort insole (art. 352320) • metal free penetration resistance • slip-resistant PU/PU outsole



UTGÅTT



UTGÅTT

S3 **UTGÅTT** **S3** **UTGÅTT**
2257 32257

S3 **UTGÅTT** **S3** **UTGÅTT**
2258 32258

CE, EN ISO 20345 S3, SRC

- size 36-48 • Cordura® Textile orange with dot pattern • water-, abrasion- and tear-resistant • lining with silver ions • replaceable Active Comfort insole (art. 352320) • metal free penetration resistance
- slip-resistant PU/PU outsole



CE, EN ISO 20345 S1, SRC

- size 36-48 • Cordura® Textile red/black with warp pattern • water-, abrasion- and tear-resistant • lining with silver ions • reflective stripes • replaceable Active Comfort insole (art. 352320) • metal free penetration resistance • slip-resistant PU/PU outsole



S3



32268

CE, EN ISO 20345 S3, SRC

• size 36-52

SCRATCH-RESISTANT

coating in heel and toe area.



STEEL TOE CAP

Robust material, extremely resistant to impact and compression.



METAL FREE ANTIPUNCTURE MIDSOLE

Puncture resistant and water resistant. Prevents the penetration of external objects.



„ACTIVE COMFORT“ INSOLE

Replaceable, with activated carbon, good cushioning, absorbs moisture and wicks it away.



ORTHOPAEDIC INSOLE POSSIBLE

If customised orthopaedic insoles are required, Abeba shoes remain certified



PU OUTSOLE

SRC - slip resistance, flexible and hard-wearing, resistant to fuels, good cushioning for great foot comfort. Well-profiled outsole.



S3 **UTGÅTT** **2281**

S3 **UTGÅTT** **32281**



S3 **2280**

S3 **32280**

CE, EN ISO 20345 S3, SRC


• size 36-48 • microfibre black, microfibre white • **cold-insulating** lining • triple velcro fastening • cushioned ankle support • reflective stripes • replaceable Active Comfort insole (art. 352320) • metal free penetration resistance • slip-resistant PU outsole





S2 2172 **S2**  32172



S2 UTGÅTT 2171 **S2**  UTGÅTT 32171

CE, EN ISO 20345 S2, SRC

- size 36-50 • microfibre white, microfibre black • lining with silver ions • scratch-resistant coating in heel and toe area
- reflective stripes • replaceable Active Comfort insole (art. 352320) • slip-resistant PU outsole



S3  UTGÅTT 32269



S3  32270

CE, EN ISO 20345 S3, SRC

- size 36-50 • smooth leather black • lining with silver ions
- scratch-resistant coating in heel and toe area • reflective stripes
- replaceable Active Comfort insole (art. 352320) • **low cut** • metal free penetration resistance • slip-resistant PU outsole



CE, EN ISO 20345 S3, SRC

- size 36-48 • smooth leather black yellow/green design • lining with silver ions
- scratch-resistant coating in heel and toe area • replaceable Active Comfort insole (art. 352320) • metal free penetration resistance • slip-resistant PU outsole



CRAWLER





Outsole

- SRC slip resistance according to EN ISO 20345
- TPU outsole, abrasion resistant
- Comfortable cushioning effect and high flexibility
- Joint stabiliser
- Flexural zones optimize your natural motion sequence

Insole

- replaceable Active Comfort insole (art. 351920, 352020), more information on page 122
- Suitable for orthopedic insoles



Infobox

- Clog und low shoe
- ESD
- FITTING - wide
- Available from size 36 - 48



- Soft PU midsole
- Toe caps in aluminium or steel

Shoelaces

- Set in 3 colours (red, blue and green), length 80 cm for low shoes, suitable for all low lace-up shoes
- art. 370118



Technology

- Antistatic/ESD dissipative according to EN 61340-4-3 and EN 61340-5-1



Asymmetrical heel



Heel strap fixed with adjustable fastening



SB  **UTGÅTT**
34555




SB **UTGÅTT**  **UTGÅTT**
4556 34556

CE, EN ISO 20345 SB, A, E, FO, SRC

- size 36-48 • microfibre white, microfibre black • scratch-resistant coating in toe area • lining with silver ions • heel strap fixed, adjustable
- instep strap adjustable, with elastic band • replaceable Active Comfort insole (art. 352020) • **aluminium toe-cap** • slip-resistant TPU outsole



S1 **UTGÅTT**  **UTGÅTT**
4541 34541



S1  **UTGÅTT**
34581

CE, EN ISO 20345 S1, SRC

- size 36-48 • velour black/blue with **breathable textile inlays**
- scratch-resistant coating in heel and toe area • lining with silver ions
- instep strap adjustable • replaceable Active Comfort insole (art. 351920)
- **aluminium toe-cap** • slip-resistant TPU outsole



CE, EN ISO 20345 S1, SRC

- size 36-48 • velour black/blue • lining with silver ions
- replaceable Active Comfort insole (art. 351920)
- **aluminium toe-cap** • slip-resistant TPU outsole



S2 **UTGÅTT**  **UTGÅTT**
4500 34500

CE, EN ISO 20345 S2, SRC

- size 36-48 • microfibre white/grey • seamless upper • lining with silver ions
- reflective stripes • replaceable Active Comfort insole (art. 351920)
- **aluminium toe-cap** • slip-resistant TPU outsole





UTGÅTT

S2 **UTGÅTT** **S2**  **UTGÅTT**
4621 34621

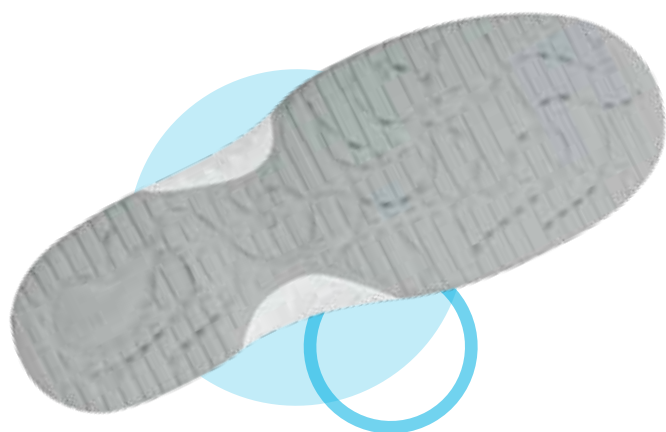
CE, EN ISO 20345 S2, SRC

• size 36-48 • velour black/blue • scratch-resistant coating in heel and toe area • lining with silver ions • replaceable Active Comfort insole (art. 351920) • **steel toe-cap** • slip-resistant TPU outsole



uni6





Outsole

- SRC slip resistance according to EN ISO 20345
- TPU outsole, abrasion resistant
- Resistant to fuel
- Flexing zones walking comfort

Insole

- replaceable Active Comfort insole (art. 352520), more information on page 122
- Suitable for orthopedic insoles



Infobox

- low shoe
- ESD
- FITTING - normal
- Available from size 35 - 48 (according to models)
- Soft PU midsole



Shoelaces

- Set in 3 colours (red, blue and green), length 80 cm for low shoes, suitable for all low lace-up shoes
- art. 370118



Technology

- Antistatic/ESD dissipative according to EN 61340-4-3 and EN 61340-5-1



S1 1795 **UTGÅTT** **S1**  **31795**

CE, EN ISO 20345 S1, SRC

- size 35-48 • microfibre white • lining microfibre, breathable, moisture absorbing • replaceable Active Comfort insole (art. 352520) • slip-resistant TPU outsole



S2 1766 **UTGÅTT** **S2**  **31766** **UTGÅTT**

CE, EN ISO 20345 S2, SRC

- size 35-43 • microfibre white with coloured lacing • lining with silver ions • replaceable Active Comfort insole (art. 352520) • slip-resistant TPU outsole • incl. white exchange laces



S1  **31721**

CE, EN ISO 20345 S1, SRC

- size 35-48 • velour black with **breathable textile inlays** • lining with silver ions • replaceable Active Comfort insole (art. 352520) • slip-resistant TPU outsole



S2 1751 **UTGÅTT** **S2**  **31751** **UTGÅTT**

CE, EN ISO 20345 S2, SRC

- size 35-48 • smooth leather black • lining microfibre, breathable, moisture absorbing • replaceable Active Comfort insole (art. 352520) • slip-resistant TPU outsole



S3 1629 **S3**  **31629**

CE, EN ISO 20345 S3, SRC

- size 35-48 • microfibre-textile white with pattern, microfibre-textile black with pattern • water-repellent • lining with silver ions • replaceable Active Comfort insole (art. 352520) • metal free penetration resistance • slip-resistant TPU outsole



S3 1628 **S3**  **31628**

also
available as
S3



S2 1741

S2  31741

S3 1641 **UTGÅTT** **S3**  **UTGÅTT** 31641



S2 1740

S2  31740

CE, EN ISO 20345 S2 / S3, SRC

• size 35-48 • microfibre black, microfibre white • lining with silver ions • instep area with elastic band • replaceable Active Comfort insole (art. 352520) • slip-resistant TPU outsole



 micro

KNITTED TEXTILE

Lightweight, stain-resistant, water repellent and dimensionally stable, washable at 30°C, it is perfectly suited to the constraints of catering.



STEEL TOE CAP

Robust material, extremely resistant to impact and compression.



LACES FASTENING

Optimal and individual adaptation to the foot. A well-fitting shoe reduces the risk of falls and accidents.

MICROFIBRE LINING

Moisture-absorbing, for optimum comfort. Free of toxic substances, breathable, antimicrobial, anti-odour and tear resistant. Certified according to the strict test procedure „Standard 100 by OEKO-TEX“.

„ACTIVE COMFORT“ INSOLE

Replaceable, with activated carbon, good cushioning, absorbs moisture and wicks it away.



art.
1676

TPU OUTSOLE

SRC - slip-resistance and cushioning. Profile design with flex zones for high walking comfort. Particularly suitable on surfaces such as tiles and hall floors. Safe stance even on wet surfaces.

METAL FREE ANTIPUNCTURE MIDSOLE

Puncture resistant and water resistant. Prevents the penetration of external objects.



ORTHOPAEDIC INSOLE POSSIBLE

If customised orthopaedic insoles are required, Abeba shoes remain certified.



S2 **UTGÅTT** **S2** **31775**

S3 **1676** **S3** **31676**

• incl. blue laces
UTGÅTT **S2** **1774** **UTGÅTT** **S2** **31774**

S2 **1773** **S2** **31773**

S2 **1772** **S2** **31772**

CE, EN ISO 20345 S2 / S3, SRC

- size 35-48 • knitted textile anthracite, orange, blue, white, black • protection against splash water
- lining with silver ions • replaceable Active Comfort insole (art. 352520) • slip-resistant TPU outsole







S1 1760

S1  31760



S2 1761

S2  31761



UTGÅTT

S1  UTGÅTT
31762



UTGÅTT

S1  UTGÅTT
31763

S3 1765

S3  31765

CE, EN ISO 20345 S1 / S2 / S3, SRC

- size 35-48 • functional leather with honeycomb pattern black, white, black/white, blue und functional leather navy blue • water-repellent • scratch-resistant • lining with silver ions • replaceable Active Comfort insole (art. 352520) • metal free penetration resistance as S3 • slip-resistant TPU outsole



UTGÅTT



S2 1780

S2  31780



S2 1781

S2  31781

S2 1787

S2  31787



UTGÅTT

S2 1786

S2  UTGÅTT
31786

CE, EN ISO 20345 S2, SRC

- size 35-48 • microfibre white/black, white, black, white/blue • lining with silver ions • replaceable Active Comfort insole (art. 352520) • slip-resistant TPU outsole



Product example:

**art. 1780
with blue
shoelaces**

**Shoelaces Set
art. 370118,
more information
on page 123**



Static Control





Outsole

- SRA slip resistance according to EN ISO 20345
- Rubber outsole maximum grip
- Torsions waist hard rubber compound
- Protection from ankle twisting
- Resistant to fuel

Insole

- replaceable acc Wave insole (art. 3553), more information on page 122



Infobox

- low shoe
- ESD
- FITTING - normal
- Available from size 35 - 47
- Composite toe-cap (200 joules)
- metal free
- Soft PU midsole



Technology

- Antistatic/ESD dissipative according to EN 61340-4-3 and EN 61340-5-1



UTGÅTT



CE, EN ISO 20345 S1, SRA

- size 36-47 • leather black with scratch-resistant carbon coating and **breathable textile inlays** • lining with silver ions • double velcro fastening • replaceable acc Wave insole (art. 3553) • slip-resistant special rubber outsole



UTGÅTT



CE, EN ISO 20345 S1, SRA

- size 36-47 • velour anthracite with **breathable textile inlays** • lining with silver ions • double velcro fastening • replaceable acc Wave insole (art. 3553) • slip-resistant special rubber outsole



CE, EN ISO 20345 S2, SRA

- size 36-47 • microfibre white • lining with silver ions • instep area with elastic band • replaceable acc Wave insole (art. 3553) • slip-resistant special rubber outsole



A[®]micro

BUSINESS



Infobox

- low shoe
- ESD
- FITTING - normal
- Available from size 36 - 48

- Steel toe-cap (200 joules) according to DIN EN 12568
- Resistant to fuel



Technology

- Antistatic/ESD dissipative according to EN 61340-4-3 and EN 61340-5-1



33230

CE, EN ISO 20345 S2, SRA

• size 36-48 • smooth leather black • lining microfibre, breathable, moisture absorbing • slip-resistant ESD dissipative rubber outsole



33240

CE, EN ISO 20345 S2, SRA

• size 36-48 • smooth leather black • lining microfibre, breathable, moisture absorbing • slip-resistant ESD dissipative rubber outsole



Protektor S.A.





Outsole

- Antistatic
- SRC slip resistance according to EN ISO 20345
- PU outsole, abrasion resistant
- Resistant to fuel

Shoelaces

- Set in 3 colours (red, blue and green), length 80 cm for low shoes, suitable for all low lace-up shoes
- art. 370118



Infobox

- low shoe and boot
- ESD
- FITTING - normal
- Available from size 36 - 48
- Removable insole
- Soft PU midsole





S2 1600



S2 1602

CE, EN ISO 20345 S2, SRC

• size 36-48 • smooth leather white, smooth leather black • lining leather • slip-resistant PU outsole



S2 1630

CE, EN ISO 20345 S2, SRC

• size 36-48 • smooth leather white • lining leather • cushioned ankle support • reflective stripes • slip-resistant PU outsole



S3 1645



S3 1655

CE, EN ISO 20345 S3, SRC

• size 36-48 • smooth leather white, smooth leather black • lining leather • triple velcro fastening • cushioned ankle support • reflective stripes • penetration resistance • slip-resistant PU outsole





S3 2230



S3 2232

CE, EN ISO 20345 S3, SRC

• size 36-48 • smooth leather white, smooth leather black • lining leather • double velcro fastening • penetration resistance • slip-resistant PU outsole



S3 1610

CE, EN ISO 20345 S3, SRC

• size 36-48 • smooth leather white • lining leather • penetration resistance • slip-resistant PU outsole



S3 1635

CE, EN ISO 20345 S3, SRC

• size 36-48 • smooth leather white • lining leather • cushioned ankle support • reflective stripes • penetration resistance • slip-resistant PU outsole



INSOLES



ACTIVE COMFORT

• replaceable Active Comfort insole • with activated carbon • cushioning effect • moisture absorption • moisture release to the outside • light • antistatic / ESD-compatible according to EN 61340

OCCUPATIONAL SHOES:

351710 • x-light	open	size 35–48
351610 • x-light	closed	size 35–48
352610 • Dynamic		size 35–48
352710 • easy		size 35–48
352510 • uni6		size 35–48

SAFETY SHOES:

351720 • x-light	open	size 35–48
351620 • x-light	closed	size 35–48
352520 • uni6		size 35–48
352420 • anatom	open	size 36–52
352320 • anatom	closed	size 36–52
352020 • crawler aluminium	open	size 36–48
351920 • crawler aluminium/steel	closed	size 36–48



ACC WAVE

• replaceable acc Wave insole (air clima comfort) • relieves muscles, ligaments and spine • cushioning over the whole surface • climate regulating and comfortable • antistatic/ESD dissipative according to EN 61340

3553 • Static Control size 36–47



ACTIVE MEDIFIT

• replaceable Active MediFit insole • with anti odour activated carbon • stabilization of deep muscles thanks to the Activ Concept • cushioning effect • breathability • moisture absorption • reduced tiredness in standing position due to uniform weight distribution • antistatic / ESD-compatible according to EN 61340

352630 • Dynamic flow size 35–48



AIR CUSHION

• replaceable insole for shoes with air cushion sole • antistatic / ESD dissipative according to EN 61340

3551 • air cushion grey size 35–47



REFLEXOR® MASSAGE

• replaceable „Reflexor®“ Massage active-footbed • stimulates the blood circulation by massage knobs | orthopaedic footbed • antistatic / ESD dissipative according to EN 61340

3565 • Reflexor®	anthracite	size 36–42
3585 • Reflexor®	white	size 36–42
3566 • Reflexor®	anthracite	size 40–46
3586 • Reflexor®	white	size 40–46
3572 • Reflexor® Comfort	anthracite	size 36–43
3584 • Reflexor® Comfort	white	size 36–43



REFLEXOR® LADIES

• replaceable, microfibre covered Reflexor® footbed • pain surface • antistatic / ESD dissipative according to EN 61340

3567 • Reflexor®	white	size 36–42
3568 • Reflexor®	anthracite	size 36–42



REFLEXOR® MEN

3569 • Reflexor®	white	size 40–46
3570 • Reflexor®	anthracite	size 40–46

SHOELACES



SET OF SHOELACES

• Set of 3 colours (red, blue and green)

370118	lace-up shoe	length 80 cm
370110	boot	length 100 cm

TECHNICAL INFORMATION

BASIC REQUIREMENTS • EXTRACT

	EN ISO 20347 OCCUPATIONAL SHOES	EN ISO 20345 SAFETY SHOES
anti-slip property (SRA, SRB or SRC)	OB	SB
toe cap resistance to impact	–	200 joules

ADDITIONAL REQUIREMENTS

closed heel area • antistatic • energy absorption in the heel area	01	S1
same as 01 • plus resistance to penetration and absorption of water	02	S2
same as 02 • plus penetration resistance and profiled sole	03	S3

REQUIREMENTS • STANDARDS

	OB	01	02	03	SB	S1	S2	S3
--	----	----	----	----	----	----	----	----

BASIC REQUIREMENTS • EXTRACT

toe protection (200 joules)					●	●	●	●
anti-slip property (SRA, SRB or SRC)	●	●	●	●	●	●	●	●

ADDITIONAL REQUIREMENTS • EXTRACT

energy absorption in the heel area	E	○	●	●	●	○	●	●	●
heat insulation of the outsole	HI	○	○	○	○	○	○	○	○
cold insulation of the outsole	CI	○	○	○	○	○	○	○	○
penetration resistance	P	○	○	○	●	○	○	○	●
antistatic property	A	○	●	●	●	○	●	●	●
fuel resistance	FO	○	○	○	○	○	●	●	●

● fulfills requirements

○ requirement may be fulfilled, but is optional

O = Occupational shoes

S = Safety shoes

SLIP RESISTANCE ACCORDING TO EN ISO 20344-20347

In 2004 the standards EN ISO 20344-20347:2004 have been introduced, supplemented in 2007 by appendix A, concerning requests for slip resistance which are now regulated by the latest standards EN ISO 20344-20347.

For testing the slip resistance, the shoe is fixed in different positions in a measuring device and is drawn over various test floorings. The established value is called slip coefficient.

Tests are performed on various flooring materials such as ceramic tiles with SLS and steel floor with glycerol. Depending on the result of the tested shoe on ceramic tiles or steel floor or even on both, the slip resistance is classified into SRA, SRB or SRC. In standard EN ISO 13287:2012, replacing DIN 4843 part 100 earlier used in Germany, the testing processes are described in detail.

For more information please contact any authorised test and certification institute.



TECHNOLOGY

• SLIP RESISTANCE EN ISO 20344-20347

SRA

Slip resistance on floors with ceramic tiles with SLS (sodium lauryl ether sulfate solution)

SRB

Slip resistance on steel floor with glycerol

SRC

Slip resistance on floor with ceramic tiles with SLS and on steel floor with glycerol (SRC=SRA+SRB)



A^{micro} is an innovative high-tech material which is especially water-resistant and breathable. It even surpasses hydrophobic leather. It is washable up to 30°C without shrinking and anti-bacterial, which is making it perfect for the use in hygienic sensitive areas. Additionally it can be equipped with various treatments such as silver ions. Due to its special structure it is light and smooth but in the same time robust and tear resistant. **A^{micro}** is leather looking without turning yellow with sunlight.

MICROFIBRE LINING

This material is a new breathable high-tech microfibre lining that can absorb 8 times its weight of water. It offers a maximum comfort and a complete dryness for a perfect foot climate.

- Absorbs moisture and transfer it outside
- Breathable - antimicrobial - Anti-odours
- Temperature regulating
- CO₂ neutral production
- Free of pollutants
- Odourless and tearproof

The microfibre linings that we use in our shoes are certified by OEKO-TEX® STANDARD 100 which is an independent, extensive testing and certification system. Along the certification all components of the tested products are reviewed for different kinds of noxious substances, most of the time even beyond the legal guidelines.

THE TOE-CAPS FROM ABEBA



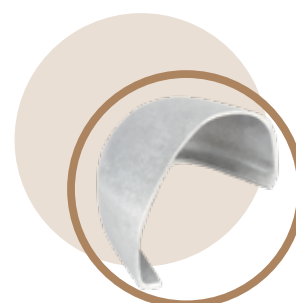
COMPOSITE TOE-CAP

- Certified according to DIN EN 12568 Tested outside the shoe (200 joules)
- Certified according to EN ISO 20345 Tested inside footwear (200 joules)
- Thermoplastic polyamid, high impact resistance and high resilience
- Shock resistant composite material, metal free and approx. 40 % lighter than steel



STEEL TOE-CAP

- Certified according to DIN EN 12568 Tested outside the shoe (200 joules)
- Certified according to EN ISO 20345 Tested inside footwear (200 joules)
- Highly shock resistant and protective



ALUMINIUM TOE-CAP

- Certified according to DIN EN 12568 Tested outside the shoe (200 joules)
- Certified according to EN ISO 20345 Tested inside footwear (200 joules)
- Approx. 40 % lighter than steel, improved balance of the shoe



INDEX

Art.-No.	Page	Size	Series	Description	Norm	Marking	Insole	Category
1000	85	36 - 46	Classic	clog, fixed heel strap	CE, EN ISO 20345	SB, A, E, FO, SRC	-	Safety shoes
1001	85	36 - 46	Classic	clog, fixed heel strap	CE, EN ISO 20345	SB, A, E, FO, SRC	-	Safety shoes
1010	85	36 - 46	Classic	clog, fixed heel strap	CE, EN ISO 20345	SB, A, E, FO, SRC	-	Safety shoes
1011	85	36 - 46	Classic	clog, fixed heel strap	CE, EN ISO 20345	SB, A, E, FO, SRC	-	Safety shoes
1064	80	36 - 42	Reflexor	clog, fixed heel strap	antistatic		-	Occupational Shoes
1092	80	36 - 42	Reflexor	mule	antistatic		-	Occupational Shoes
1094	80	36 - 42	Reflexor	mule	antistatic		-	Occupational Shoes
1122	98	36 - 50	Anatom	lace-up shoes	CE, EN ISO 20345	S1, SRC	352320	Safety shoes
1275	115	36 - 47	Static Control	sandal, velcro	CE, EN ISO 20345	S1, SRA	3553	Safety shoes
1500	85	36 - 46	Classic	low shoe	CE, EN ISO 20345	S2, SRC	-	Safety shoes
1600	120	36 - 48	Protektor	lace-up shoes	CE, EN ISO 20345	S2, SRC	-	Safety shoes
1602	120	36 - 48	Protektor	lace-up shoes	CE, EN ISO 20345	S2, SRC	-	Safety shoes
1610	121	36 - 48	Protektor	lace-up shoes	CE, EN ISO 20345	S3, SRC	-	Safety shoes
1628	108	35 - 48	Uni6	lace-up shoes	CE, EN ISO 20345	S3, SRC	352520	Safety shoes
1629	108	35 - 48	Uni6	lace-up shoes	CE, EN ISO 20345	S3, SRC	352520	Safety shoes
1630	120	36 - 48	Protektor	boot	CE, EN ISO 20345	S2, SRC	-	Safety shoes
1635	121	36 - 48	Protektor	boot	CE, EN ISO 20345	S3, SRC	-	Safety shoes
1641	109	35 - 48	Uni6	slip-on	CE, EN ISO 20345	S3, SRC	352520	Safety shoes
1645	120	36 - 48	Protektor	boot, velcro	CE, EN ISO 20345	S3, SRC	-	Safety shoes
1655	120	36 - 48	Protektor	boot, velcro	CE, EN ISO 20345	S3, SRC	-	Safety shoes
1676	110	35 - 48	Uni6	lace-up shoes	CE, EN ISO 20345	S3, SRC	352520	Safety shoes
1740	109	35 - 48	Uni6	slip-on	CE, EN ISO 20345	S2, SRC	352520	Safety shoes
1741	109	35 - 48	Uni6	slip-on	CE, EN ISO 20345	S2, SRC	352520	Safety shoes
1751	108	35 - 48	Uni6	lace-up shoes	CE, EN ISO 20345	S2, SRC	352520	Safety shoes
1760	112	35 - 48	Uni6	lace-up shoes	CE, EN ISO 20345	S1, SRC	352520	Safety shoes
1761	112	35 - 48	Uni6	lace-up shoes	CE, EN ISO 20345	S2, SRC	352520	Safety shoes
1765	112	35 - 48	Uni6	lace-up shoes	CE, EN ISO 20345	S3, SRC	352520	Safety shoes
1766	108	35 - 43	Uni6	lace-up shoes	CE, EN ISO 20345	S2, SRC	352520	Safety shoes
1772	110	35 - 48	Uni6	lace-up shoes	CE, EN ISO 20345	S2, SRC	352520	Safety shoes
1773	110	35 - 48	Uni6	lace-up shoes	CE, EN ISO 20345	S2, SRC	352520	Safety shoes
1774	110	35 - 48	Uni6	lace-up shoes	CE, EN ISO 20345	S2, SRC	352520	Safety shoes
1775	110	35 - 48	Uni6	lace-up shoes	CE, EN ISO 20345	S2, SRC	352520	Safety shoes
1780	112	35 - 48	Uni6	lace-up shoes	CE, EN ISO 20345	S2, SRC	352520	Safety shoes
1781	112	35 - 48	Uni6	lace-up shoes	CE, EN ISO 20345	S2, SRC	352520	Safety shoes
1786	112	35 - 48	Uni6	lace-up shoes	CE, EN ISO 20345	S2, SRC	352520	Safety shoes
1787	112	35 - 48	Uni6	lace-up shoes	CE, EN ISO 20345	S2, SRC	352520	Safety shoes
1795	108	35 - 48	Uni6	sandal	CE, EN ISO 20345	S1, SRC	352520	Safety shoes
2120	96	36 - 52	Anatom	clog, fixed heel strap	CE, EN ISO 20345	SB, A, E, FO, SRC	352420	Safety shoes
2125	96	36 - 52	Anatom	clog, fixed heel strap	CE, EN ISO 20345	SB, A, E, FO, SRC	352420	Safety shoes
2130	97	36 - 52	Anatom	slip-on	CE, EN ISO 20345	S2, SRC	352320	Safety shoes
2131	97	36 - 50	Anatom	lace-up shoes	CE, EN ISO 20345	S2, SRC	352320	Safety shoes
2135	97	36 - 52	Anatom	slip-on	CE, EN ISO 20345	S2, SRC	352320	Safety shoes
2136	97	36 - 50	Anatom	lace-up shoes	CE, EN ISO 20345	S2, SRC	352320	Safety shoes
2140	98	36 - 48	Anatom	low shoe, velcro	CE, EN ISO 20345	S2, SRC	352320	Safety shoes
2171	101	36 - 50	Anatom	boot	CE, EN ISO 20345	S2, SRC	352320	Safety shoes
2172	101	36 - 50	Anatom	boot	CE, EN ISO 20345	S2, SRC	352320	Safety shoes
2230	121	36 - 48	Protektor	low shoe	CE, EN ISO 20345	S3, SRC	-	Safety shoes
2232	121	36 - 48	Protektor	low shoe	CE, EN ISO 20345	S3, SRC	-	Safety shoes
2238	99	36 - 48	Anatom	lace-up shoes	CE, EN ISO 20345	S3, SRC	352320	Safety shoes
2251	99	36 - 52	Anatom	lace-up shoes	CE, EN ISO 20345	S3, SRC	352320	Safety shoes

Art.-No.	Page	Size	Series	Description	Norm	Marking	Insole	Category
2252	99	36 - 52	Anatom	lace-up shoes	CE, EN ISO 20345	S3, SRC	352320	Safety shoes
2257	99	36 - 48	Anatom	lace-up shoes	CE, EN ISO 20345	S3, SRC	352320	Safety shoes
2280	100	36 - 48	Anatom	boot	CE, EN ISO 20345	S3, SRC	352320	Safety shoes
2281	100	36 - 48	Anatom	boot	CE, EN ISO 20345	S3, SRC	352320	Safety shoes
2282	99	36 - 52	Anatom	sandal, velcro	CE, EN ISO 20345	S1P, SRC	352320	Safety shoes
2283	99	36 - 52	Anatom	sandal, velcro	CE, EN ISO 20345	S1P, SRC	352320	Safety shoes
2370	56	35 - 47	Air Cushion	slip-on	CE, EN ISO 20347	01, SRA	-	Occupational Shoes
2600	56	35 - 47	Air Cushion	lace-up shoes	CE, EN ISO 20347	02, SRA	3551	Occupational Shoes
2610	56	35 - 47	Air Cushion	lace-up shoes	CE, EN ISO 20347	02, SRA	3551	Occupational Shoes
2616	97	36 - 50	Anatom	sandal, velcro	CE, EN ISO 20345	S1, SRC	352320	Safety shoes
2626	97	36 - 52	Anatom	lace-up shoes	CE, EN ISO 20345	S1, SRC	352320	Safety shoes
2700	56	39 - 47	Air Cushion	slip-on	CE, EN ISO 20347	02, SRA	3551	Occupational Shoes
2710	56	39 - 47	Air Cushion	slip-on	CE, EN ISO 20347	02, SRA	3551	Occupational Shoes
3000	67	34 - 42	Service	service shoe			-	Occupational Shoes
3030	67	36 - 42	Service	service shoe	CE, EN ISO 20347	01, FO, SRB	-	Occupational Shoes
3120	67	39 - 47	Manager	lace-up shoes	ESD dissipative		-	Occupational Shoes
3620	83	35 - 47	Cleanroom	boot	CE, EN ISO 20347	01, SRA	-	Occupational Shoes
3900	83	36 - 48	Cleanroom	overshoe			-	Occupational Shoes
3910	83	36 - 48	Cleanroom	overshoe			-	Occupational Shoes
3940	67	36 - 42	Business Lady	pumps	ESD dissipative		-	Occupational Shoes
4040	46	34 - 48	Nature	clog, fixed heel strap	CE, EN ISO 20347	0B, A, FO, SRC	-	Occupational Shoes
4045	46	34 - 48	Nature	clog, fixed heel strap	CE, EN ISO 20347	0B, A, FO, SRC	-	Occupational Shoes
4050	46	34 - 48	Nature	clog, fixed heel strap	CE, EN ISO 20347	0B, A, FO, SRC	-	Occupational Shoes
4055	46	34 - 48	Nature	clog, fixed heel strap	CE, EN ISO 20347	0B, A, FO, SRC	-	Occupational Shoes
4080	46	34 - 48	Nature	mule	CE, EN ISO 20347	0B, A, FO, SRC	-	Occupational Shoes
4085	46	34 - 48	Nature	mule	CE, EN ISO 20347	0B, A, FO, SRC	-	Occupational Shoes
4086	47	34 - 48	Nature	mule	CE, EN ISO 20347	0B, A, FO, SRC	-	Occupational Shoes
4090	47	34 - 48	Nature	sandal	CE, EN ISO 20347	0B, A, FO, SRC	-	Occupational Shoes
4096	47	34 - 48	Nature	sandal	CE, EN ISO 20347	0B, A, FO, SRC	-	Occupational Shoes
4500	104	36 - 48	Crawler Aluminium	lace-up shoes	CE, EN ISO 20345	S2, SRC	351920	Safety shoes
4541	104	36 - 48	Crawler Aluminium	sandal	CE, EN ISO 20345	S1, SRC	351920	Safety shoes
4556	104	36 - 48	Crawler Aluminium	clog, fixed heel strap	CE, EN ISO 20345	SB, A, E, FO, SRC	352020	Safety shoes
4621	105	36 - 48	Crawler Steel	lace-up shoes	CE, EN ISO 20345	S2, SRC	351920	Safety shoes
5001	22	36 - 42	high Original	clog, foldable heel strap	CE, EN ISO 20347	0B, A, E, FO, SRC	-	Occupational Shoes
5007	20	35 - 48	The Original	clog, foldable heel strap	CE, EN ISO 20347	0B, A, FO, SRC	-	Occupational Shoes
5008	22	36 - 42	High Original	clog, foldable heel strap	CE, EN ISO 20347	0B, A, E, FO, SRC	-	Occupational Shoes
5013	20	35 - 48	The Original	clog, foldable heel strap	CE, EN ISO 20347	0B, A, FO, SRC	-	Occupational Shoes
5080	20	35 - 43	The Original	clog, foldable heel strap	CE, EN ISO 20347	0B, A, FO, SRC	-	Occupational Shoes
5081	20	35 - 43	The Original	clog, foldable heel strap	CE, EN ISO 20347	0B, A, FO, SRC	-	Occupational Shoes
5100	39	36 - 47	Rubber	clog, fixed heel strap	CE, EN ISO 20347	0B, A, FO, SRC	-	Occupational Shoes
5150	39	36 - 47	Rubber	clog, fixed heel strap	CE, EN ISO 20347	0B, A, FO, SRC	-	Occupational Shoes
5200	38	36 - 47	Rubber	clog, foldable heel strap	CE, EN ISO 20347	0B, A, FO, SRC	-	Occupational Shoes
5250	38	36 - 47	Rubber	clog, foldable heel strap	CE, EN ISO 20347	0B, A, FO, SRC	-	Occupational Shoes
5300	38	36 - 47	Rubber	clog, foldable heel strap	CE, EN ISO 20347	0B, A, FO, SRC	-	Occupational Shoes
5310	38	36 - 47	Rubber	clog, foldable heel strap	CE, EN ISO 20347	0B, A, FO, SRC	-	Occupational Shoes
5700	81	40 - 46	Reflexor	lace-up shoes	CE, EN ISO 20347	01, SRB	3586/ 3569	Occupational Shoes
5710	81	40 - 46	Reflexor	lace-up shoes	CE, EN ISO 20347	01, SRB	3566/ 3570	Occupational Shoes
6728	61	35 - 48	Uni6	lace-up shoes	CE, EN ISO 20347	02, FO, SRC	352510	Occupational Shoes
6729	61	35 - 48	Uni6	lace-up shoes	CE, EN ISO 20347	02, FO, SRC	352510	Occupational Shoes
6741	60	35 - 48	Uni6	slip-on	CE, EN ISO 20347	02, FO, SRC	352510	Occupational Shoes

Art.-No.	Page	Size	Series	Description	Norm	Marking	Insole	Category
6750	64	35 - 48	Uni6	lace-up shoes	CE, EN ISO 20347	02, FO, SRC	352510	Occupational Shoes
6760	64	35 - 48	Uni6	lace-up shoes	CE, EN ISO 20347	01, FO, SRC	352510	Occupational Shoes
6761	64	35 - 48	Uni6	lace-up shoes	CE, EN ISO 20347	02, FO, SRC	352510	Occupational Shoes
6766	60	35 - 43	Uni6	lace-up shoes	CE, EN ISO 20347	02, FO, SRC	352510	Occupational Shoes
6772	62	35 - 48	Uni6	lace-up shoes	CE, EN ISO 20347	02, FO, SRC	352510	Occupational Shoes
6773	62	35 - 48	Uni6	lace-up shoes	CE, EN ISO 20347	02, FO, SRC	352510	Occupational Shoes
6774	62	35 - 48	Uni6	lace-up shoes	CE, EN ISO 20347	02, FO, SRC	352510	Occupational Shoes
6775	62	35 - 48	Uni6	lace-up shoes	CE, EN ISO 20347	02, FO, SRC	352510	Occupational Shoes
6776	62	35 - 48	Uni6	lace-up shoes	CE, EN ISO 20347	02, FO, SRC	352510	Occupational Shoes
6780	65	35 - 48	Uni6	lace-up shoes	CE, EN ISO 20347	02, FO, SRC	352510	Occupational Shoes
6781	65	35 - 48	Uni6	lace-up shoes	CE, EN ISO 20347	02, FO, SRC	352510	Occupational Shoes
6786	65	35 - 48	Uni6	lace-up shoes	CE, EN ISO 20347	02, FO, SRC	352510	Occupational Shoes
6787	65	35 - 48	Uni6	lace-up shoes	CE, EN ISO 20347	02, FO, SRC	352510	Occupational Shoes
6795	60	35 - 48	Uni6	sandal, velcro	CE, EN ISO 20347	01, FO, SRC	352510	Occupational Shoes
6874	81	36 - 43	Reflexor Comfort	sandal	CE, EN ISO 20347	0B, A, E, SRB	3584	Occupational Shoes
6903	80	36 - 42	Reflexor	clog, foldable heel strap	CE, EN ISO 20347	0B, A, E, SRB	3585/ 3567	Occupational Shoes
7001	22	36 - 42	High Original	clog, foldable heel strap	CE, EN ISO 20347	0B, A, E, FO, SRC	-	Occupational Shoes
7008	22	36 - 42	High Original	clog, foldable heel strap	CE, EN ISO 20347	0B, A, E, FO, SRC	-	Occupational Shoes
7020	18	35 - 48	The Original	clog, foldable heel strap	CE, EN ISO 20347	0B, FO, SRC	-	Occupational Shoes
7021	18	35 - 48	The Original	clog, foldable heel strap	CE, EN ISO 20347	0B, FO, SRC	-	Occupational Shoes
7030	18	35 - 48	The Original	clog, foldable heel strap	CE, EN ISO 20347	0B, FO, SRC	-	Occupational Shoes
7031	18	35 - 48	The Original	clog, foldable heel strap	CE, EN ISO 20347	0B, FO, SRC	-	Occupational Shoes
7050	19	35 - 48	The Original	clog	CE, EN ISO 20347	0B, FO, SRC	-	Occupational Shoes
7080	20	35 - 43	The Original	clog, foldable heel strap	CE, EN ISO 20347	0B, FO, SRC	-	Occupational Shoes
7081	20	35 - 43	The Original	clog, foldable heel strap	CE, EN ISO 20347	0B, FO, SRC	-	Occupational Shoes
7090	20	35 - 43	The Original	clog, foldable heel strap	CE, EN ISO 20347	0B, FO, SRC	-	Occupational Shoes
7091	20	35 - 43	The Original	clog, foldable heel strap	CE, EN ISO 20347	0B, FO, SRC	-	Occupational Shoes
7201	19	35 - 48	The Original	clog, foldable heel strap	CE, EN ISO 20347	0B, A, FO, SRC	-	Occupational Shoes
7208	21	35 - 48	The Original	clog, fixed heel strap	CE, EN ISO 20347	0B, A, FO, SRC	-	Occupational Shoes
7209	21	35 - 48	The Original	clog, fixed heel strap	CE, EN ISO 20347	0B, A, FO, SRC	-	Occupational Shoes
7310	27	35 - 48	Dynamic	clog, foldable heel strap	CE, EN ISO 20347	0B, A, E, FO, SRC	352610	Occupational Shoes
7312	27	35 - 48	Dynamic	clog, foldable heel strap	CE, EN ISO 20347	0B, A, E, FO, SRC	352610	Occupational Shoes
7313	27	35 - 48	Dynamic	clog, foldable heel strap	CE, EN ISO 20347	0B, A, E, FO, SRC	352610	Occupational Shoes
7315	27	35 - 48	Dynamic	clog, foldable heel strap	CE, EN ISO 20347	0B, A, E, FO, SRC	352610	Occupational Shoes
7320	29	35 - 43	Dynamic	clog, fixed heel strap	CE, EN ISO 20347	0B, A, E, FO, SRC	352610	Occupational Shoes
7326	30	35 - 48	Dynamic	clog, fixed heel strap	CE, EN ISO 20347	0B, A, E, FO, SRC	352610	Occupational Shoes
7327	30	35 - 48	Dynamic	clog, fixed heel strap	CE, EN ISO 20347	0B, A, E, FO, SRC	352610	Occupational Shoes
7328	30	35 - 48	Dynamic	clog, fixed heel strap	CE, EN ISO 20347	0B, A, E, FO, SRC	352610	Occupational Shoes
7329	30	35 - 48	Dynamic	clog, fixed heel strap	CE, EN ISO 20347	0B, A, E, FO, SRC	352610	Occupational Shoes
7331	28	35 - 48	Dynamic	clog, fixed heel strap	CE, EN ISO 20347	0B, A, E, FO, SRC	352610	Occupational Shoes
7332	28	35 - 48	Dynamic	clog, fixed heel strap	CE, EN ISO 20347	0B, A, E, FO, SRC	352610	Occupational Shoes
7335	28	35 - 48	Dynamic	clog, fixed heel strap	CE, EN ISO 20347	0B, A, E, FO, SRC	352610	Occupational Shoes
7341	28	35 - 48	Dynamic	clog, fixed heel strap	CE, EN ISO 20347	0B, A, E, FO, SRC	352610	Occupational Shoes
7345	28	35 - 48	Dynamic	clog, fixed heel strap	CE, EN ISO 20347	0B, A, E, FO, SRC	352610	Occupational Shoes
7351	26	35 - 48	Dynamic	clog, foldable heel strap	CE, EN ISO 20347	0B, A, E, FO, SRC	352610	Occupational Shoes
7360	27	35 - 48	Dynamic	clog, fixed heel strap	CE, EN ISO 20347	0B, A, E, FO, SRC	352610	Occupational Shoes
7361	27	35 - 48	Dynamic	clog, fixed heel strap	CE, EN ISO 20347	0B, A, E, FO, SRC	352610	Occupational Shoes
7367	27	35 - 48	Dynamic	clog, fixed heel strap	CE, EN ISO 20347	0B, A, E, FO, SRC	352610	Occupational Shoes
7368	27	35 - 48	Dynamic	clog, fixed heel strap	CE, EN ISO 20347	0B, A, E, FO, SRC	352610	Occupational Shoes
7369	27	35 - 48	Dynamic	clog, fixed heel strap	CE, EN ISO 20347	0B, A, E, FO, SRC	352610	Occupational Shoes

Art.-No.	Page	Size	Series	Description	Norm	Marking	Insole	Category
7370	53	35 - 43	Dynamic Flow	lace-up shoes	CE, EN ISO 20347	01, FO, SRC	352630	Occupational Shoes
7374	52	35 - 48	Dynamic Flow	low shoe, easy put on and off	CE, EN ISO 20347	01, FO, SRC	352630	Occupational Shoes
7375	52	35 - 48	Dynamic Flow	low shoe, easy put on and off	CE, EN ISO 20347	01, FO, SRC	352630	Occupational Shoes
7376	52	35 - 48	Dynamic Flow	low shoe, easy put on and off	CE, EN ISO 20347	01, FO, SRC	352630	Occupational Shoes
7521	23	36 - 42	The Original plus	clog, foldable heel strap	CE, EN ISO 20347	OB, A, E, FO, SRC	-	Occupational Shoes
7531	23	36 - 42	The Original plus	clog, foldable heel strap	CE, EN ISO 20347	OB, A, E, FO, SRC	-	Occupational Shoes
7620	34	35 - 43	Easy	clog, fixed heel strap	CE, EN ISO 20347	OB, A, E, FO, SRC	352710	Occupational Shoes
7621	34	35 - 43	Easy	clog, fixed heel strap	CE, EN ISO 20347	OB, A, E, FO, SRC	352710	Occupational Shoes
7622	34	35 - 48	Easy	clog, fixed heel strap	CE, EN ISO 20347	OB, A, E, FO, SRC	352710	Occupational Shoes
7630	34	35 - 48	Easy	clog, foldable heel strap	CE, EN ISO 20347	OB, A, E, FO, SRC	352710	Occupational Shoes
7631	34	35 - 48	Easy	clog, foldable heel strap	CE, EN ISO 20347	OB, A, E, FO, SRC	352710	Occupational Shoes
8040	46	34 - 48	Nature	clog, fixed heel strap	CE, EN ISO 20347	OB, A, FO, SRC	-	Occupational Shoes
8045	46	34 - 48	Nature	clog, fixed heel strap	CE, EN ISO 20347	OB, A, FO, SRC	-	Occupational Shoes
8210	43	36 - 47	Arrow	clog, foldable heel strap	CE, EN ISO 20347	OB, A, FO, SRA	-	Occupational Shoes
8212	43	48 - 51	Arrow	clog, foldable heel strap	CE, EN ISO 20347	OB, A, FO, SRA	-	Occupational Shoes
8300	42	36 - 47	Arrow	clog, foldable heel strap	CE, EN ISO 20347	OB, A, FO, SRA	-	Occupational Shoes
8302	42	48 - 51	Arrow	clog, foldable heel strap	CE, EN ISO 20347	OB, A, FO, SRA	-	Occupational Shoes
8310	42	36 - 47	Arrow	clog, foldable heel strap	CE, EN ISO 20347	OB, A, FO, SRA	-	Occupational Shoes
8312	42	48 - 51	Arrow	clog, foldable heel strap	CE, EN ISO 20347	OB, A, FO, SRA	-	Occupational Shoes
8400	43	36 - 47	Arrow	clog, fixed heel strap	CE, EN ISO 20347	OB, A, FO, SRA	-	Occupational Shoes
9100	39	36 - 47	Rubber	clog, fixed heel strap	CE, EN ISO 20347	OB, A, FO, SRC	-	Occupational Shoes
9110	38	36 - 47	Rubber	clog, fixed heel strap	CE, EN ISO 20347	OB, A, FO, SRC	-	Occupational Shoes
9150	39	36 - 47	Rubber	clog, fixed heel strap	CE, EN ISO 20347	OB, A, FO, SRC	-	Occupational Shoes
9200	38	36 - 47	Rubber	clog, foldable heel strap	CE, EN ISO 20347	OB, A, FO, SRC	-	Occupational Shoes
9250	38	36 - 47	Rubber	clog, foldable heel strap	CE, EN ISO 20347	OB, A, FO, SRC	-	Occupational Shoes
9252	38	36 - 47	Rubber	clog, foldable heel strap	CE, EN ISO 20347	OB, A, FO, SRC	-	Occupational Shoes
9300	38	36 - 47	Rubber	clog, foldable heel strap	CE, EN ISO 20347	OB, A, FO, SRC	-	Occupational Shoes
9310	38	36 - 47	Rubber	clog, foldable heel strap	CE, EN ISO 20347	OB, A, FO, SRC	-	Occupational Shoes
9600	49	35 - 46	Autoclavable	clog, foldable heel strap	CE, EN ISO 20347	OB, A, E, SRC	-	Occupational Shoes
9610	49	35 - 46	Autoclavable	clog, foldable heel strap	CE, EN ISO 20347	OB, A, E, SRC	-	Occupational Shoes
9620	49	35 - 46	Autoclavable	clog, foldable heel strap	CE, EN ISO 20347	OB, A, E, SRC	-	Occupational Shoes
9630	49	35 - 46	Autoclavable	clog, foldable heel strap	CE, EN ISO 20347	OB, A, E, SRC	-	Occupational Shoes
31000	85	36 - 46	Classic	clog, fixed heel strap	CE, EN ISO 20345	SB, A, E, FO, SRC	-	Safety shoes
31001	85	36 - 46	Classic	clog, fixed heel strap	CE, EN ISO 20345	SB, A, E, FO, SRC	-	Safety shoes
31010	85	36 - 46	Classic	clog, fixed heel strap	CE, EN ISO 20345	SB, A, E, FO, SRC	-	Safety shoes
31011	85	36 - 46	Classic	clog, fixed heel strap	CE, EN ISO 20345	SB, A, E, FO, SRC	-	Safety shoes
31064	80	36 - 42	Reflexor	clog, fixed heel strap	ESD dissipative		-	Occupational Shoes
31092	80	36 - 42	Reflexor	mule	ESD dissipative		-	Occupational Shoes
31094	80	36 - 42	Reflexor	mule	ESD dissipative		-	Occupational Shoes
31378	115	36 - 47	Static Control	sandal, velcro	CE, EN ISO 20345	S1, SRA	3553	Safety shoes
31392	115	36 - 47	Static Control	slip-on	CE, EN ISO 20345	S2, SRA	3553	Safety shoes
31628	108	35 - 48	Uni6	lace-up shoes	CE, EN ISO 20345	S3, SRC	352520	Safety shoes
31629	108	35 - 48	Uni6	lace-up shoes	CE, EN ISO 20345	S3, SRC	352520	Safety shoes
31641	109	35 - 48	Uni6	slip-on	CE, EN ISO 20345	S3, SRC	352520	Safety shoes
31676	110	35 - 48	Uni6	lace-up shoes	CE, EN ISO 20345	S3, SRC	352520	Safety shoes
31721	108	35 - 48	Uni6	lace-up shoes	CE, EN ISO 20345	S1, SRC	352520	Safety shoes
31740	109	35 - 48	Uni6	slip-on	CE, EN ISO 20345	S2, SRC	352520	Safety shoes
31741	109	35 - 48	Uni6	slip-on	CE, EN ISO 20345	S2, SRC	352520	Safety shoes
31751	108	35 - 48	Uni6	lace-up shoes	CE, EN ISO 20345	S2, SRC	352520	Safety shoes
31760	112	35 - 48	Uni6	lace-up shoes	CE, EN ISO 20345	S1, SRC	352520	Safety shoes

Art.-No.	Page	Size	Series	Description	Norm	Marking	Insole	Category
31761	112	35 - 48	Uni6	lace-up shoes	CE, EN ISO 20345	S2, SRC	352520	Safety shoes
31762	112	35 - 48	Uni6	lace-up shoes	CE, EN ISO 20345	S1, SRC	352520	Safety shoes
31763	112	35 - 48	Uni6	lace-up shoes	CE, EN ISO 20345	S1, SRC	352520	Safety shoes
31765	112	35 - 48	Uni6	lace-up shoes	CE, EN ISO 20345	S3, SRC	352520	Safety shoes
31766	108	35 - 43	Uni6	lace-up shoes	CE, EN ISO 20345	S3, SRC	352520	Safety shoes
31772	110	35 - 48	Uni6	lace-up shoes	CE, EN ISO 20345	S2, SRC	352520	Safety shoes
31773	110	35 - 48	Uni6	lace-up shoes	CE, EN ISO 20345	S2, SRC	352520	Safety shoes
31774	110	35 - 48	Uni6	lace-up shoes	CE, EN ISO 20345	S2, SRC	352520	Safety shoes
31775	110	35 - 48	Uni6	lace-up shoes	CE, EN ISO 20345	S2, SRC	352520	Safety shoes
31780	112	35 - 48	Uni6	lace-up shoes	CE, EN ISO 20345	S2, SRC	352520	Safety shoes
31781	112	35 - 48	Uni6	lace-up shoes	CE, EN ISO 20345	S2, SRC	352520	Safety shoes
31786	112	35 - 48	Uni6	lace-up shoes	CE, EN ISO 20345	S2, SRC	352520	Safety shoes
31787	112	35 - 48	Uni6	lace-up shoes	CE, EN ISO 20345	S2, SRC	352520	Safety shoes
31795	108	35 - 48	Uni6	sandal	CE, EN ISO 20345	S1, SRC	352520	Safety shoes
32120	96	36 - 52	Anatom	clog, fixed heel strap	CE, EN ISO 20345	SB, A, E, FO, SRC	352420	Safety shoes
32125	96	36 - 52	Anatom	clog, fixed heel strap	CE, EN ISO 20345	SB, A, E, FO, SRC	352420	Safety shoes
32130	97	36 - 52	Anatom	slip-on	CE, EN ISO 20345	S2, SRC	352320	Safety shoes
32131	97	36 - 50	Anatom	lace-up shoes	CE, EN ISO 20345	S2, SRC	352320	Safety shoes
32135	97	36 - 52	Anatom	slip-on	CE, EN ISO 20345	S2, SRC	352320	Safety shoes
32136	97	36 - 50	Anatom	lace-up shoes	CE, EN ISO 20345	S2, SRC	352320	Safety shoes
32140	98	36 - 48	Anatom	low shoe, velcro	CE, EN ISO 20345	S2, SRC	352320	Safety shoes
32147	98	36 - 50	Anatom	lace-up shoes	CE, EN ISO 20345	S1, SRC	352320	Safety shoes
32156	98	36 - 50	Anatom	lace-up shoes	CE, EN ISO 20345	S2, SRC	352320	Safety shoes
32171	101	36 - 50	Anatom	boot	CE, EN ISO 20345	S2, SRC	352320	Safety shoes
32172	101	36 - 50	Anatom	boot	CE, EN ISO 20345	S2, SRC	352320	Safety shoes
32189	98	36 - 52	Anatom	sandal	CE, EN ISO 20345	S1, SRC	352320	Safety shoes
32238	99	36 - 48	Anatom	lace-up shoes	CE, EN ISO 20345	S3, SRC	352320	Safety shoes
32247	98	36 - 48	Anatom	lace-up shoes	CE, EN ISO 20345	S1P, SRC	352320	Safety shoes
32251	99	36 - 52	Anatom	lace-up shoes	CE, EN ISO 20345	S3, SRC	352320	Sicherheitsschuhe
32252	99	36 - 52	Anatom	lace-up shoes	CE, EN ISO 20345	S3, SRC	352320	Sicherheitsschuhe
32256	98	36 - 52	Anatom	lace-up shoes	CE, EN ISO 20345	S3, SRC	352320	Safety shoes
32257	99	36 - 48	Anatom	lace-up shoes	CE, EN ISO 20345	S3, SRC	352320	Sicherheitsschuhe
32268	100	36 - 52	Anatom	boot	CE, EN ISO 20345	S3, SRC	352320	Safety shoes
32269	101	36 - 50	Anatom	boot	CE, EN ISO 20345	S3, SRC	352320	Safety shoes
32270	101	36 - 48	Anatom	boot	CE, EN ISO 20345	S3, SRC	352320	Safety shoes
32280	100	36 - 48	Anatom	boot	CE, EN ISO 20345	S3, SRC	352320	Safety shoes
32281	100	36 - 48	Anatom	boot	CE, EN ISO 20345	S3, SRC	352320	Safety shoes
32282	99	36 - 52	Anatom	sandal, velcro	CE, EN ISO 20345	S1P, SRC	352320	Sicherheitsschuhe
32283	99	36 - 52	Anatom	sandal, velcro	CE, EN ISO 20345	S1P, SRC	352320	Sicherheitsschuhe
32289	98	36 - 48	Anatom	sandal	CE, EN ISO 20345	S1P, SRC	352320	Safety shoes
32300	57	35 - 47	Air Cushion	slip-on, perforated	CE, EN ISO 20347	O1, SRA	3551	Occupational Shoes
32310	57	39 - 47	Air Cushion	slip-on, perforated	CE, EN ISO 20347	O1, SRA	3551	Occupational Shoes
32370	56	35 - 47	Air Cushion	slip-on	CE, EN ISO 20347	O1, SRA	-	Occupational Shoes
32430	67	40 - 47	Business Men	lace-up shoes	CE, EN ISO 20347	O1, SRB	-	Occupational Shoes
32450	67	40 - 47	Business Men	lace-up shoes	CE, EN ISO 20347	O1, SRB	-	Occupational Shoes
32600	56	35 - 47	Air Cushion	lace-up shoes	CE, EN ISO 20347	O2, SRA	3551	Occupational Shoes
32610	56	35 - 47	Air Cushion	lace-up shoes	CE, EN ISO 20347	O2, SRA	3551	Occupational Shoes
32700	56	39 - 47	Air Cushion	slip-on	CE, EN ISO 20347	O2, SRA	3551	Occupational Shoes
32710	56	39 - 47	Air Cushion	slip-on	CE, EN ISO 20347	O2, SRA	3551	Occupational Shoes
33230	117	36 - 48	Business Men	lace-up shoes	CE, EN ISO 20345	S2, SRA	-	Safety shoes

Art.-No.	Page	Size	Series	Description	Norm	Marking	Insole	Category
33240	117	36 - 48	Business Men	lace-up shoes	CE, EN ISO 20345	S2, SRA	-	Safety shoes
34500	104	36 - 48	Crawler Alu	lace-up shoes	CE, EN ISO 20345	S2, SRC	351920	Safety shoes
34541	104	36 - 48	Crawler Alu	sandal	CE, EN ISO 20345	S1, SRC	351920	Safety shoes
34555	104	36 - 48	Crawler Alu	clog, fixed heel strap	CE, EN ISO 20345	SB, A, E, FO, SRC	352020	Safety shoes
34556	104	36 - 48	Crawler Alu	clog, fixed heel strap	CE, EN ISO 20345	SB, A, E, FO, SRC	352020	Safety shoes
34581	104	36 - 48	Crawler Alu	lace-up shoes	CE, EN ISO 20345	S1, SRC	351920	Safety shoes
34621	105	36 - 48	Crawler Steel	lace-up shoes	CE, EN ISO 20345	S2, SRC	351920	Safety shoes
35600	42	36 - 47	Arrow	clog, foldable heel strap	CE, EN ISO 20347	OB, A, FO, SRA	-	Occupational Shoes
35602	42	48 - 51	Arrow	clog, foldable heel strap	CE, EN ISO 20347	OB, A, FO, SRA	-	Occupational Shoes
35700	81	40 - 46	Reflexor	lace-up shoes	CE, EN ISO 20347	01, SRB	3586/ 3569	Occupational Shoes
35710	81	40 - 46	Reflexor	lace-up shoes	CE, EN ISO 20347	01, SRB	3566/ 3570	Occupational Shoes
36721	64	35 - 48	Uni6	lace-up shoes	CE, EN ISO 20347	01, FO, SRC	352510	Occupational Shoes
36728	61	35 - 48	Uni6	lace-up shoes	CE, EN ISO 20347	02, FO, SRC	352510	Occupational Shoes
36729	61	35 - 48	Uni6	lace-up shoes	CE, EN ISO 20347	02, FO, SRC	352510	Occupational Shoes
36740	60	35 - 48	Uni6	slip-on	CE, EN ISO 20347	02, FO, SRC	352510	Occupational Shoes
36741	60	35 - 48	Uni6	slip-on	CE, EN ISO 20347	02, FO, SRC	352510	Occupational Shoes
36750	64	35 - 48	Uni6	lace-up shoes	CE, EN ISO 20347	02, FO, SRC	352510	Occupational Shoes
36760	64	35 - 48	Uni6	lace-up shoes	CE, EN ISO 20347	01, FO, SRC	352510	Occupational Shoes
36761	64	35 - 48	Uni6	lace-up shoes	CE, EN ISO 20347	02, FO, SRC	352510	Occupational Shoes
36766	60	35 - 43	Uni6	lace-up shoes	CE, EN ISO 20347	02, FO, SRC	352510	Occupational Shoes
36772	62	35 - 48	Uni6	lace-up shoes	CE, EN ISO 20347	02, FO, SRC	352510	Occupational Shoes
36773	62	35 - 48	Uni6	lace-up shoes	CE, EN ISO 20347	02, FO, SRC	352510	Occupational Shoes
36774	62	35 - 48	Uni6	lace-up shoes	CE, EN ISO 20347	02, FO, SRC	352510	Occupational Shoes
36775	62	35 - 48	Uni6	lace-up shoes	CE, EN ISO 20347	02, FO, SRC	352510	Occupational Shoes
36776	62	35 - 48	Uni6	lace-up shoes	CE, EN ISO 20347	02, FO, SRC	352510	Occupational Shoes
36780	65	35 - 48	Uni6	lace-up shoes	CE, EN ISO 20347	02, FO, SRC	352510	Occupational Shoes
36781	65	35 - 48	Uni6	lace-up shoes	CE, EN ISO 20347	02, FO, SRC	352510	Occupational Shoes
36786	65	35 - 48	Uni6	lace-up shoes	CE, EN ISO 20347	02, FO, SRC	352510	Occupational Shoes
36787	65	35 - 48	Uni6	lace-up shoes	CE, EN ISO 20347	02, FO, SRC	352510	Occupational Shoes
36795	60	35 - 48	Uni6	sandal, velcro	CE, EN ISO 20347	01, FO, SRC	352510	Occupational Shoes
36813	81	36 - 43	Reflexor Comfort	clog, foldable heel strap	CE, EN ISO 20347	OB, A, E, SRB	3572	Occupational Shoes
36819	81	36 - 43	Reflexor Comfort	mule	CE, EN ISO 20347	OB, A, E, SRB	3572	Occupational Shoes
36872	81	36 - 43	Reflexor Comfort	sandal	CE, EN ISO 20347	OB, A, E, SRB	3572	Occupational Shoes
36874	81	36 - 43	Reflexor Comfort	sandal	CE, EN ISO 20347	OB, A, E, SRB	3584	Occupational Shoes
36902	80	36 - 42	Reflexor	mule	CE, EN ISO 20347	OB, A, E, SRB	3585/ 3567	Occupational Shoes
36903	80	36 - 42	Reflexor	clog, foldable heel strap	CE, EN ISO 20347	OB, A, E, SRB	3585/ 3567	Occupational Shoes
36912	80	36 - 42	Reflexor	mule	CE, EN ISO 20347	OB, A, E, SRB	3565/ 3568	Occupational Shoes
37310	27	35 - 48	Dynamic	clog, foldable heel strap	CE, EN ISO 20347	OB, A, E, FO, SRC	352610	Occupational Shoes
37312	27	35 - 48	Dynamic	clog, foldable heel strap	CE, EN ISO 20347	OB, A, E, FO, SRC	352610	Occupational Shoes
37313	27	35 - 48	Dynamic	clog, foldable heel strap	CE, EN ISO 20347	OB, A, E, FO, SRC	352610	Occupational Shoes
37315	27	35 - 48	Dynamic	clog, foldable heel strap	CE, EN ISO 20347	OB, A, E, FO, SRC	352610	Occupational Shoes
37320	29	35 - 43	Dynamic	clog, fixed heel strap	CE, EN ISO 20347	OB, A, E, FO, SRC	352610	Occupational Shoes
37326	30	35 - 48	Dynamic	clog, foldable heel strap	CE, EN ISO 20347	OB, A, E, FO, SRC	352610	Occupational Shoes
37327	30	35 - 48	Dynamic	clog, foldable heel strap	CE, EN ISO 20347	OB, A, E, FO, SRC	352610	Occupational Shoes
37328	30	35 - 48	Dynamic	clog, foldable heel strap	CE, EN ISO 20347	OB, A, E, FO, SRC	352610	Occupational Shoes
37329	30	35 - 48	Dynamic	clog, foldable heel strap	CE, EN ISO 20347	OB, A, E, FO, SRC	352610	Occupational Shoes
37331	28	35 - 48	Dynamic	clog, fixed heel strap	CE, EN ISO 20347	OB, A, E, FO, SRC	352610	Occupational Shoes
37332	28	35 - 48	Dynamic	clog, fixed heel strap	CE, EN ISO 20347	OB, A, E, FO, SRC	352610	Occupational Shoes
37335	28	35 - 48	Dynamic	clog, fixed heel strap	CE, EN ISO 20347	OB, A, E, FO, SRC	352610	Occupational Shoes
37341	28	35 - 48	Dynamic	clog, fixed heel strap	CE, EN ISO 20347	OB, A, E, FO, SRC	352610	Occupational Shoes

Art.-No.	Page	Size	Series	Description	Norm	Marking	Insole	Category
37343	28	35 - 48	Dynamic	clog, fixed heel strap	CE, EN ISO 20347	OB, A, E, FO, SRC	352610	Occupational Shoes
37345	28	35 - 48	Dynamic	clog, fixed heel strap	CE, EN ISO 20347	OB, A, E, FO, SRC	352610	Occupational Shoes
37351	26	35 - 48	Dynamic	clog, foldable heel strap	CE, EN ISO 20347	OB, A, E, FO, SRC	352610	Occupational Shoes
37360	27	35 - 48	Dynamic	clog, fixed heel strap	CE, EN ISO 20347	OB, A, E, FO, SRC	352610	Occupational Shoes
37361	27	35 - 48	Dynamic	clog, fixed heel strap	CE, EN ISO 20347	OB, A, E, FO, SRC	352610	Occupational Shoes
37367	27	35 - 48	Dynamic	clog, fixed heel strap	CE, EN ISO 20347	OB, A, E, FO, SRC	352610	Occupational Shoes
37368	27	35 - 48	Dynamic	clog, fixed heel strap	CE, EN ISO 20347	OB, A, E, FO, SRC	352610	Occupational Shoes
37369	27	35 - 48	Dynamic	clog, fixed heel strap	CE, EN ISO 20347	OB, A, E, FO, SRC	352610	Occupational Shoes
37370	53	35 - 48	Dynamic Flow	lace-up shoes	CE, EN ISO 20347	01, FO, SRC	352630	Occupational Shoes
37374	52	35 - 48	Dynamic Flow	low shoe, easy put on and off	CE, EN ISO 20347	01, FO, SRC	352630	Occupational Shoes
37375	52	35 - 48	Dynamic Flow	low shoe, easy put on and off	CE, EN ISO 20347	01, FO, SRC	352630	Occupational Shoes
37376	52	35 - 48	Dynamic Flow	low shoe, easy put on and off	CE, EN ISO 20347	01, FO, SRC	352630	Occupational Shoes
37520	23	36 - 42	The Original plus	clog, foldable heel strap	CE, EN ISO 20347	OB, A, E, FO, SRC	-	Occupational Shoes
37521	23	36 - 42	The Original plus	clog, foldable heel strap	CE, EN ISO 20347	OB, A, E, FO, SRC	-	Occupational Shoes
37530	23	36 - 42	The Original plus	clog, foldable heel strap	CE, EN ISO 20347	OB, A, E, FO, SRC	-	Occupational Shoes
37531	23	36 - 42	The Original plus	clog, foldable heel strap	CE, EN ISO 20347	OB, A, E, FO, SRC	-	Occupational Shoes
37620	34	35 - 43	Easy	clog, fixed heel strap	CE, EN ISO 20347	OB, A, E, FO, SRC	352710	Occupational Shoes
37621	34	35 - 43	Easy	clog, fixed heel strap	CE, EN ISO 20347	OB, A, E, FO, SRC	352710	Occupational Shoes
37622	34	35 - 48	Easy	clog, fixed heel strap	CE, EN ISO 20347	OB, A, E, FO, SRC	352710	Occupational Shoes
37630	34	35 - 48	Easy	clog, foldable heel strap	CE, EN ISO 20347	OB, A, E, FO, SRC	352710	Occupational Shoes
37631	34	35 - 48	Easy	clog, foldable heel strap	CE, EN ISO 20347	OB, A, E, FO, SRC	352710	Occupational Shoes
38200	43	36 - 47	Arrow	clog, foldable heel strap	CE, EN ISO 20347	OB, A, FO, SRA	-	Occupational Shoes
38202	43	48 - 51	Arrow	clog, foldable heel strap	CE, EN ISO 20347	OB, A, FO, SRA	-	Occupational Shoes
38210	43	36 - 47	Arrow	clog, foldable heel strap	CE, EN ISO 20347	OB, A, FO, SRA	-	Occupational Shoes
38212	43	48 - 51	Arrow	clog, foldable heel strap	CE, EN ISO 20347	OB, A, FO, SRA	-	Occupational Shoes
38300	42	36 - 47	Arrow	clog, foldable heel strap	CE, EN ISO 20347	OB, A, FO, SRA	-	Occupational Shoes
38302	42	48 - 51	Arrow	clog, foldable heel strap	CE, EN ISO 20347	OB, A, FO, SRA	-	Occupational Shoes
38310	42	36 - 47	Arrow	clog, foldable heel strap	CE, EN ISO 20347	OB, A, FO, SRA	-	Occupational Shoes
38312	42	48 - 51	Arrow	clog, foldable heel strap	CE, EN ISO 20347	OB, A, FO, SRA	-	Occupational Shoes
38330	43	36 - 47	Arrow	clog, foldable heel strap	CE, EN ISO 20347	OB, A, FO, SRA	-	Occupational Shoes
38332	43	48 - 51	Arrow	clog, foldable heel strap	CE, EN ISO 20347	OB, A, FO, SRA	-	Occupational Shoes
38400	43	36 - 47	Arrow	clog, fixed heel strap	CE, EN ISO 20347	OB, A, FO, SRA	-	Occupational Shoes
38600	43	36 - 47	Arrow	clog, fixed heel strap	CE, EN ISO 20347	OB, A, FO, SRA	-	Occupational Shoes
38602	43	48 - 51	Arrow	clog, fixed heel strap	CE, EN ISO 20347	OB, A, FO, SRA	-	Occupational Shoes
39600	49	35 - 46	Autoclavable	clog	CE, EN ISO 20347	OB, A, E, SRC	-	Occupational Shoes
39610	49	35 - 46	Autoclavable	clog	CE, EN ISO 20347	OB, A, E, SRC	-	Occupational Shoes
39620	49	35 - 46	Autoclavable	clog	CE, EN ISO 20347	OB, A, E, SRC	-	Occupational Shoes
39630	49	35 - 46	Autoclavable	clog	CE, EN ISO 20347	OB, A, E, SRC	-	Occupational Shoes
77020	18	35 - 47	The Original	clog, foldable heel strap	CE, EN ISO 20347	OB, E, FO, SRC	-	Occupational Shoes
77021	18	35 - 47	The Original	clog, foldable heel strap	CE, EN ISO 20347	OB, E, FO, SRC	-	Occupational Shoes
77022	17	35 - 43	The Original	clog, foldable heel strap	CE, EN ISO 20347	OB, A, E, FO, SRC	-	Occupational Shoes
77023	16	35 - 47	The Original	clog, foldable heel strap	CE, EN ISO 20347	OB, A, E, FO, SRC	-	Occupational Shoes
77024	16	35 - 43	The Original	clog, foldable heel strap	CE, EN ISO 20347	OB, A, E, FO, SRC	-	Occupational Shoes
77030	18	35 - 47	The Original	clog, foldable heel strap	CE, EN ISO 20347	OB, E, FO, SRC	-	Occupational Shoes
77031	18	35 - 47	The Original	clog, foldable heel strap	CE, EN ISO 20347	OB, E, FO, SRC	-	Occupational Shoes
77032	16	35 - 43	The Original	clog, foldable heel strap	CE, EN ISO 20347	OB, A, E, FO, SRC	-	Occupational Shoes
300119	66	35 - 43	Service	slip-on	CE, EN ISO 20347	01, FO, SRC	-	Occupational Shoes
300219	66	35 - 43	Service	slip-on	CE, EN ISO 20347	01, FO, SRC	-	Occupational Shoes
370110	85	100 cm		shoelaces set				
370118	85	80 cm		shoelaces set				

Art.-No.	Page	Size	Series	Description	Norm	Marking	Insole	Category
377022	17	35 - 43	The Original	clog, foldable heel strap	CE, EN ISO 20347	OB, E, FO, SRC	-	Occupational Shoes
377023	16	35 - 47	The Original	clog, foldable heel strap	CE, EN ISO 20347	OB, E, FO, SRC	-	Occupational Shoes
377024	16	35 - 43	The Original	clog, foldable heel strap	CE, EN ISO 20347	OB, E, FO, SRC	-	Occupational Shoes
377032	16	35 - 43	The Original	clog, foldable heel strap	CE, EN ISO 20347	OB, E, FO, SRC	-	Occupational Shoes
711020	90	35 - 48	x-light	sandal, velcro	CE, EN ISO 20345	S1, SRC	351620	Safety shoes
711026	92	35 - 48	x-light	lace-up shoes	CE, EN ISO 20345	S2, SRC	351620	Safety shoes
711027	92	35 - 48	x-light	lace-up shoes	CE, EN ISO 20345	S2, SRC	351620	Safety shoes
711028	92	35 - 48	x-light	slip-on	CE, EN ISO 20345	S2, SRC	351620	Safety shoes
711029	92	35 - 48	x-light	slip-on	CE, EN ISO 20345	S2, SRC	351620	Safety shoes
711030	88	35 - 48	x-light	clog, fixed heel strap	CE, EN ISO 20345	SB, A, E, FO, SRC	351720	Safety shoes
711031	88	35 - 48	x-light	sandal, velcro	CE, EN ISO 20345	S1, SRC	351620	Safety shoes
711032	92	35 - 48	x-light	slip-on	CE, EN ISO 20345	S2, SRC	351620	Safety shoes
711033	93	35 - 48	x-light	lace-up shoes	CE, EN ISO 20345	S2, SRC	351620	Safety shoes
711035	88	35 - 48	x-light	clog, fixed heel strap	CE, EN ISO 20345	SB, A, E, FO, SRC	351720	Safety shoes
711036	88	35 - 48	x-light	sandal, velcro	CE, EN ISO 20345	S1, SRC	351620	Safety shoes
711037	92	35 - 48	x-light	slip-on	CE, EN ISO 20345	S2, SRC	351620	Safety shoes
711038	93	35 - 48	x-light	lace-up shoes	CE, EN ISO 20345	S2, SRC	351620	Safety shoes
711041	88	35 - 48	x-light	clog, foldable heel strap	CE, EN ISO 20345	SB, A, E, FO, SRC	351720	Safety shoes
711042	88	35 - 48	x-light	clog, foldable heel strap	CE, EN ISO 20345	SB, A, E, FO, SRC	351720	Safety shoes
711046	90	35 - 48	x-light	lace-up shoes	CE, EN ISO 20345	S2, SRC	351620	Safety shoes
711047	90	35 - 48	x-light	lace-up shoes	CE, EN ISO 20345	S2, SRC	351620	Safety shoes
711050	90	35 - 48	x-light	lace-up shoes	CE, EN ISO 20345	S1, SRC	351620	Safety shoes
711100	72	35 - 48	x-light	lace-up shoes	CE, EN ISO 20347	O2, FO, SRC	351610	Occupational Shoes
711101	73	35 - 48	x-light	lace-up shoes	CE, EN ISO 20347	O2, FO, SRC	351610	Occupational Shoes
711124	77	35 - 48	x-light	lace-up shoes	CE, EN ISO 20347	O2, FO, SRC	351610	Occupational Shoes
711126	76	35 - 48	x-light	lace-up shoes	CE, EN ISO 20347	O2, FO, SRC	351610	Occupational Shoes
711127	76	35 - 48	x-light	lace-up shoes	CE, EN ISO 20347	O2, FO, SRC	351610	Occupational Shoes
711128	71	35 - 48	x-light	slip-on	CE, EN ISO 20347	O2, FO, SRC	351610	Occupational Shoes
711129	71	35 - 48	x-light	slip-on	CE, EN ISO 20347	O2, FO, SRC	351610	Occupational Shoes
711130	70	35 - 48	x-light	clog, fixed heel strap	CE, EN ISO 20347	OB, FO, SRC	351710	Occupational Shoes
711131	70	35 - 48	x-light	sandal, velcro	CE, EN ISO 20347	O1, FO, SRC	351610	Occupational Shoes
711132	75	35 - 48	x-light	slip-on	CE, EN ISO 20347	O2, FO, SRC	351610	Occupational Shoes
711133	76	35 - 48	x-light	lace-up shoes	CE, EN ISO 20347	O2, FO, SRC	351610	Occupational Shoes
711135	70	35 - 48	x-light	clog, fixed heel strap	CE, EN ISO 20347	OB, FO, SRC	351710	Occupational Shoes
711137	75	35 - 48	x-light	slip-on	CE, EN ISO 20347	O2, FO, SRC	351610	Occupational Shoes
711138	76	35 - 48	x-light	lace-up shoes	CE, EN ISO 20347	O2, FO, SRC	351610	Occupational Shoes
711141	70	35 - 48	x-light	clog, foldable heel strap	CE, EN ISO 20347	OB, FO, SRC	351710	Occupational Shoes
711146	75	35 - 48	x-light	low shoe, velcro	CE, EN ISO 20347	O2, FO, SRC	351610	Occupational Shoes
711147	75	35 - 48	x-light	low shoe, velcro	CE, EN ISO 20347	O2, FO, SRC	351610	Occupational Shoes
711150	72	35 - 48	x-light	lace-up shoes	CE, EN ISO 20347	O1, FO, SRC	351610	Occupational Shoes
711160	72	35 - 48	x-light	lace-up shoes	CE, EN ISO 20347	O2, FO, SRC	351610	Occupational Shoes
711161	76	35 - 48	x-light	lace-up shoes	CE, EN ISO 20347	O1, FO, SRC	351610	Occupational Shoes
711162	76	35 - 43	x-light	lace-up shoes	CE, EN ISO 20347	O1, FO, SRC	351610	Occupational Shoes
711827	91	35 - 48	x-light	lace-up shoes	CE, EN ISO 20345	S3, SRC	351620	Safety shoes
711860	91	35 - 48	x-light	lace-up shoes	CE, EN ISO 20345	S3, SRC	351620	Safety shoes
711874	93	35 - 48	x-light	lace-up shoes	CE, EN ISO 20345	S3, SRC	351620	Safety shoes
970111	39	36 - 47	Rubber	clog, fixed heel strap	CE, EN ISO 20347	OB, A, FO, SRC	-	Occupational Shoes
970119	39	36 - 47	Rubber	clog, fixed heel strap	CE, EN ISO 20347	OB, A, FO, SRC	-	Occupational Shoes
3970111	39	36 - 47	Rubber	clog, fixed heel strap	CE, EN ISO 20347	OB, A, FO, SRC	-	Occupational Shoes
3970119	39	36 - 47	Rubber	clog, fixed heel strap	CE, EN ISO 20347	OB, A, FO, SRC	-	Occupational Shoes

Art.-No.	Page	Size	Series	Description	Norm	Marking	Insole	Category
7131020	90	35 - 48	x-light	sandal, velcro	CE, EN ISO 20345	S1, SRC	351620	Safety shoes
7131026	92	35 - 48	x-light	lace-up shoes	CE, EN ISO 20345	S2, SRC	351620	Safety shoes
7131027	92	35 - 48	x-light	lace-up shoes	CE, EN ISO 20345	S2, SRC	351620	Safety shoes
7131028	92	35 - 48	x-light	slip-on	CE, EN ISO 20345	S2, SRC	351620	Safety shoes
7131029	92	35 - 48	x-light	slip-on	CE, EN ISO 20345	S2, SRC	351620	Safety shoes
7131030	88	35 - 48	x-light	clog, fixed heel strap	CE, EN ISO 20345	SB, A, E, FO, SRC	351720	Safety shoes
7131031	88	35 - 48	x-light	sandal, velcro	CE, EN ISO 20345	S1, SRC	351620	Safety shoes
7131032	92	35 - 48	x-light	slip-on	CE, EN ISO 20345	S2, SRC	351620	Safety shoes
7131033	93	35 - 48	x-light	lace-up shoes	CE, EN ISO 20345	S2, SRC	351620	Safety shoes
7131035	88	35 - 48	x-light	clog, fixed heel strap	CE, EN ISO 20345	SB, A, E, FO, SRC	351720	Safety shoes
7131036	88	35 - 48	x-light	sandal, velcro	CE, EN ISO 20345	S1, SRC	351620	Safety shoes
7131037	92	35 - 48	x-light	slip-on	CE, EN ISO 20345	S2, SRC	351620	Safety shoes
7131038	93	35 - 48	x-light	lace-up shoes	CE, EN ISO 20345	S2, SRC	351620	Safety shoes
7131041	88	35 - 48	x-light	clog, foldable heel strap	CE, EN ISO 20345	SB, A, E, FO, SRC	351720	Safety shoes
7131042	88	35 - 48	x-light	clog, foldable heel strap	CE, EN ISO 20345	SB, A, E, FO, SRC	351720	Safety shoes
7131046	90	35 - 48	x-light	low shoe, velcro	CE, EN ISO 20345	S2, SRC	351620	Safety shoes
7131047	90	35 - 48	x-light	low shoe, velcro	CE, EN ISO 20345	S2, SRC	351620	Safety shoes
7131050	90	35 - 48	x-light	lace-up shoes	CE, EN ISO 20345	S1, SRC	351620	Safety shoes
7131056	90	35 - 48	x-light	lace-up shoes	CE, EN ISO 20345	S1, SRC	351620	Safety shoes
7131058	90	35 - 48	x-light	lace-up shoes	CE, EN ISO 20345	S1, SRC	351620	Safety shoes
7131100	72	35 - 48	x-light	lace-up shoes	CE, EN ISO 20347	O2, FO, SRC	351610	Occupational Shoes
7131101	73	35 - 48	x-light	lace-up shoes	CE, EN ISO 20347	O2, FO, SRC	351610	Occupational Shoes
7131124	77	35 - 48	x-light	lace-up shoes	CE, EN ISO 20347	O2, FO, SRC	351610	Occupational Shoes
7131126	76	35 - 48	x-light	lace-up shoes	CE, EN ISO 20347	O2, FO, SRC	351610	Occupational Shoes
7131127	76	35 - 48	x-light	lace-up shoes	CE, EN ISO 20347	O2, FO, SRC	351610	Occupational Shoes
7131128	71	35 - 48	x-light	slip-on	CE, EN ISO 20347	O2, FO, SRC	351610	Occupational Shoes
7131129	71	35 - 48	x-light	slip-on	CE, EN ISO 20347	O2, FO, SRC	351610	Occupational Shoes
7131130	70	35 - 48	x-light	clog, fixed heel strap	CE, EN ISO 20347	OB, FO, SRC	351710	Occupational Shoes
7131131	70	35 - 48	x-light	sandal, velcro	CE, EN ISO 20347	O1, FO, SRC	351610	Occupational Shoes
7131132	75	35 - 48	x-light	slip-on	CE, EN ISO 20347	O2, FO, SRC	351610	Occupational Shoes
7131133	76	35 - 48	x-light	lace-up shoes	CE, EN ISO 20347	O2, FO, SRC	351610	Occupational Shoes
7131135	70	35 - 48	x-light	clog, fixed heel strap	CE, EN ISO 20347	OB, FO, SRC	351710	Occupational Shoes
7131136	70	35 - 48	x-light	sandal, velcro	CE, EN ISO 20347	O1, FO, SRC	351610	Occupational Shoes
7131137	75	35 - 48	x-light	slip-on	CE, EN ISO 20347	O2, FO, SRC	351610	Occupational Shoes
7131138	76	35 - 48	x-light	lace-up shoes	CE, EN ISO 20347	O2, FO, SRC	351610	Occupational Shoes
7131141	70	35 - 48	x-light	clog, foldable heel strap	CE, EN ISO 20347	OB, FO, SRC	351710	Occupational Shoes
7131142	70	35 - 48	x-light	clog, foldable heel strap	CE, EN ISO 20347	OB, FO, SRC	351710	Occupational Shoes
7131146	75	35 - 48	x-light	low shoe, velcro	CE, EN ISO 20347	O2, FO, SRC	351610	Occupational Shoes
7131147	75	35 - 48	x-light	low shoe, velcro	CE, EN ISO 20347	O2, FO, SRC	351610	Occupational Shoes
7131150	72	35 - 48	x-light	lace-up shoes	CE, EN ISO 20347	O1, FO, SRC	351610	Occupational Shoes
7131156	75	35 - 48	x-light	lace-up shoes	CE, EN ISO 20347	O1, FO, SRC	351610	Occupational Shoes
7131158	75	35 - 48	x-light	lace-up shoes	CE, EN ISO 20347	O1, FO, SRC	351610	Occupational Shoes
7131160	72	35 - 48	x-light	lace-up shoes	CE, EN ISO 20347	O2, FO, SRC	351610	Occupational Shoes
7131827	91	35 - 48	x-light	lace-up shoes	CE, EN ISO 20345	S3, SRC	351620	Safety shoes
7131860	91	35 - 48	x-light	lace-up shoes	CE, EN ISO 20345	S3, SRC	351620	Safety shoes
7131874	93	35 - 48	x-light	lace-up shoes	CE, EN ISO 20345	S3, SRC	351620	Safety shoes



Icons

ESD



INDICATION ACCORDING TO STANDARD



SUITABLE FOR KITCHENS



BREATHABLE TEXTILE



WASHABLE AT 30°C



WASHABLE AT 60°C



STEEL TOE-CAP



ALUMINIUM TOE-CAP



COMPOSITE TOE-CAP



REPLACEABLE INSOLE



ORTHOPEDIC INSOLES



HEEL AND FOOT LIFT



CUSHIONING EFFECT



AUTOCLAVABLE



HACCP-COMPLIANT



SUITABLE FOR SERVICE STAFF



METAL FREE



PENETRATION RESISTANCE



abeba



YOUR ABEBA DISTRIBUTOR:

www.abeba.com